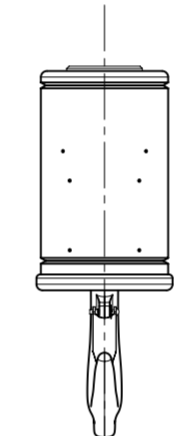
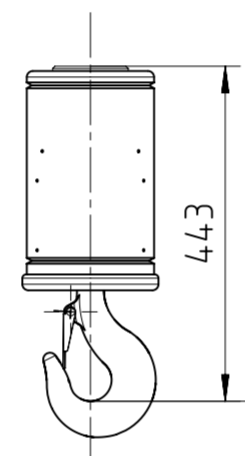
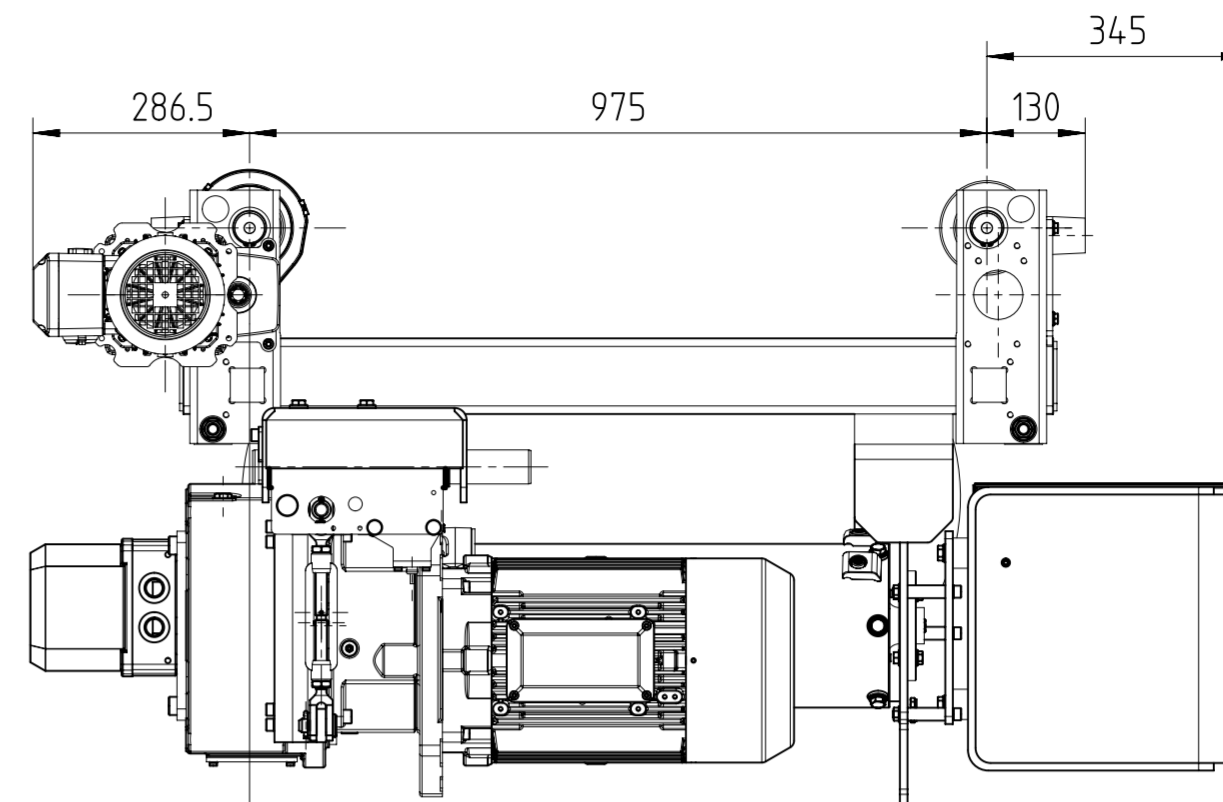
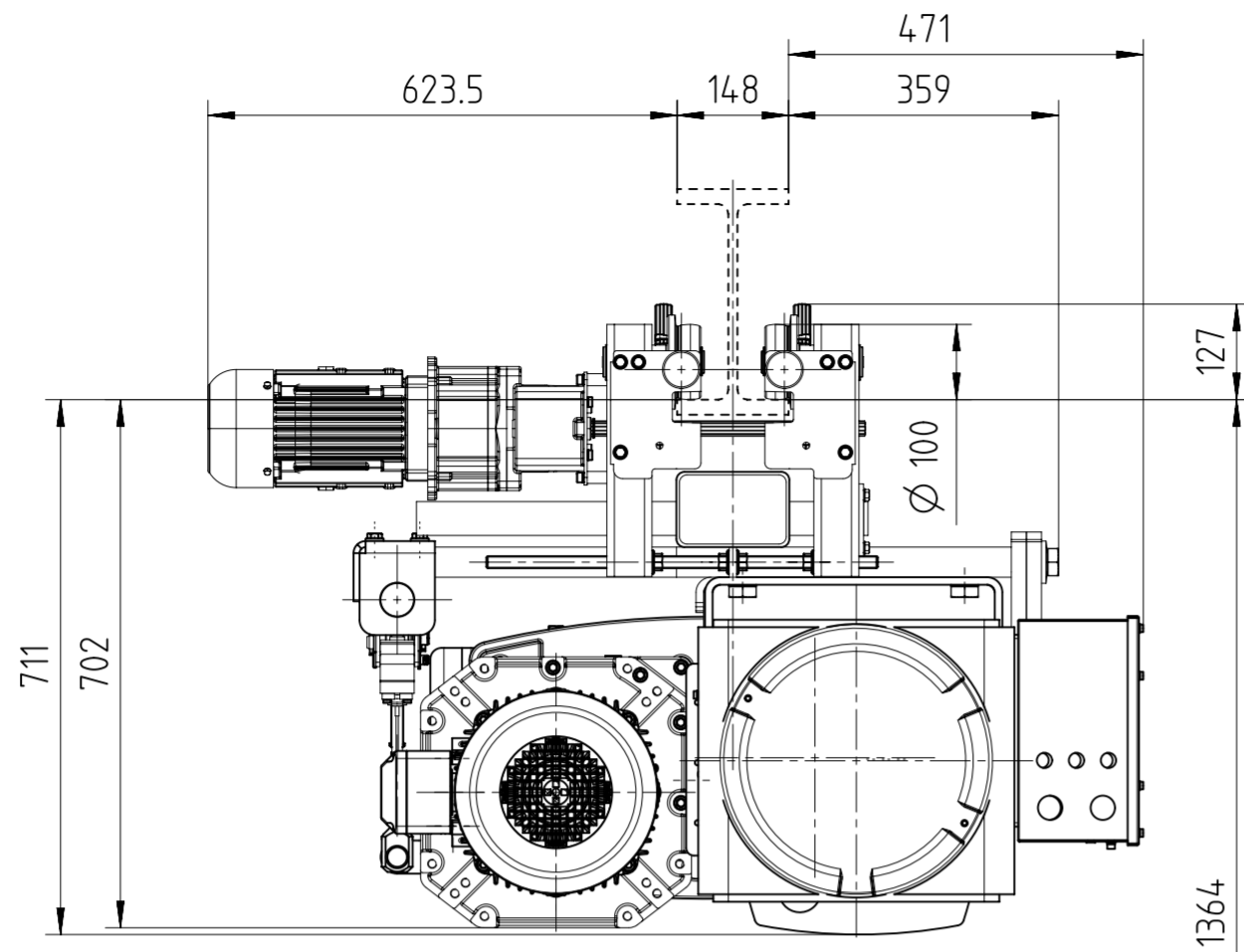


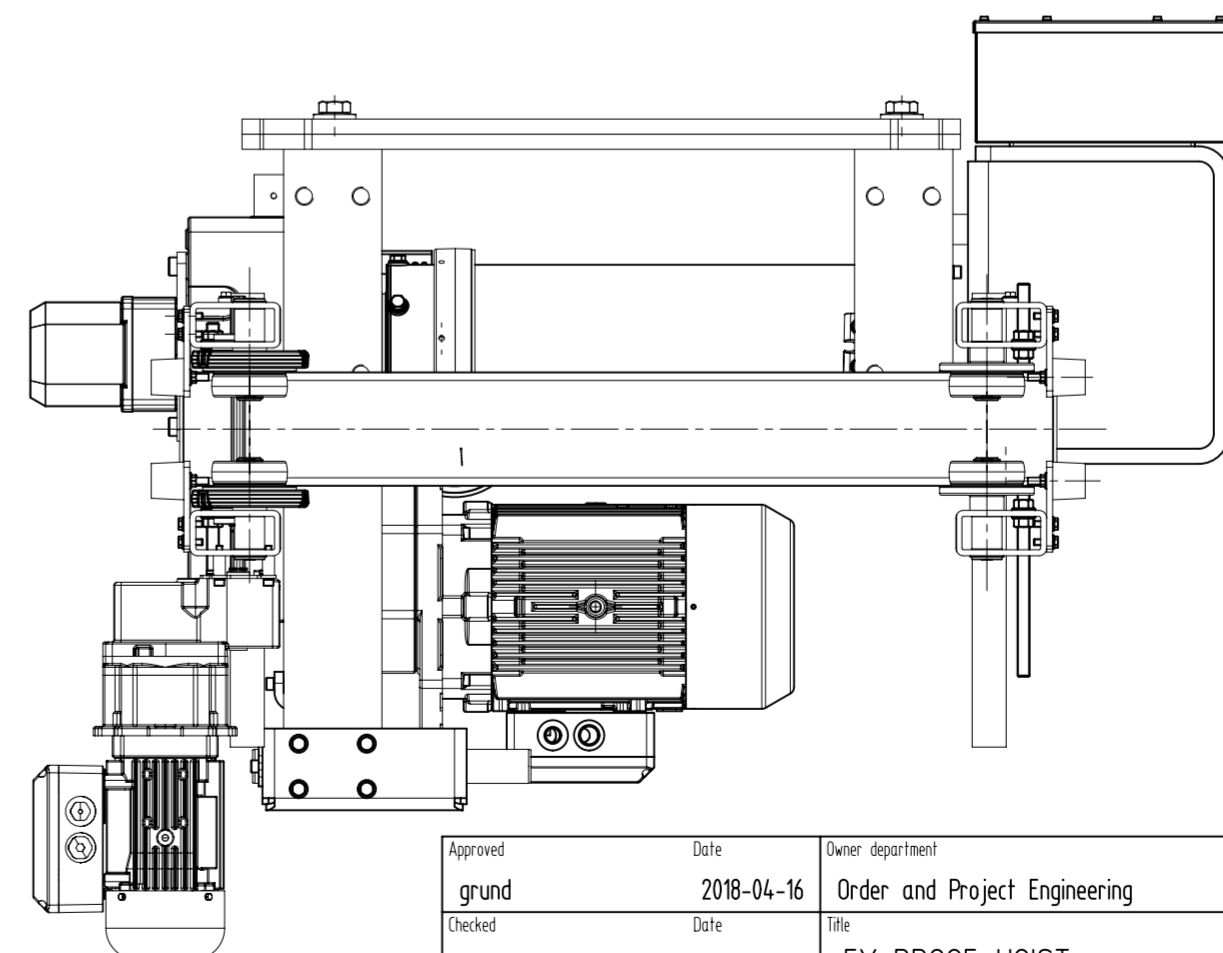
Rev	Description	ECN	Date	Revised by	Approved by
1	-		2018-04-16	grund	grund
2	-		2018-04-19	grund	grund
3	-		2018-04-19	grund	grund
4	-		2018-04-24	grund	grund



highest hook position

271 473

lowest hook position



Serial No. : 256 10 120564 050
Fabrik-Nr.

Order No. : 7901964
Auftrags-Nr.

STAHL CraneSystems Electric-wire-rope hoist S.W.L. 3200 kg
Elektro-Seilzug patan électrique à câble Traglast force de levage

Type SH 5032-16 1/1 Ex Length 2 Classification M6 (ISO)
Typ/type Länge/longueur Einstufung/groupe

Lifting Height 24,0 m Rope Ø 12,0 mm Hook Block H190-1
Hubhöhe/hauteur de levage seil/câble Hakenflasche/moufle

Hoist motor: Type 2/12A4/512 ex
Hubmotor: Typ /moteur de levage

Main hoisting speed: 9,60 m/min 5,70 kW 40%ED; 240 s/h
Haupthubgeschw./vitesse de levage principal

Micro hoisting speed: 1,60 m/min 0,82 kW 20%ED; 240 s/h
Feinhubgeschw./vitesse de levage principal micro

Carriage: Type UE-S45 Runway - Bend radius - m
Fahrwerk Typ/type de chariot Laufb./la voie de roulement Laufb./Rayon/rayon roulement

Hoisting class H2 Stress group B3 to DIN 15018
Hubklasse/classe de levage; Beanspruchungsgr./groupe de sollicitation nach/seton

Drive motor: Type SF 17 213 503ex
Fahrmotor Typ/type du moteur de chariot

1.Travel speed: 6,30 m/min 0,08 kW 20 %ED;
Fahrgesch./vitesse de direction

2.Travel speed: 25,0 m/min 0,39 kW 40 %ED;
Fahrgesch./vitesse de direction

Supply voltage 440 V; 60 Hz;
Betriebsspannung /voltage alimentation

Control voltage 120 V; 60 Hz; Mode of Protection IP 66 EN 60529
Steuerspannung/tension de commande Schutzart/système de protection

Explosion protection: Ex II 2D Ex tb III C T120°C Db/Ex II 2D ck T120°C
Explosionsschutz / protection antideflagrante

Location; Always indoor Dead Weight; 720 kg
Standard; ständig in der Halle Eigengewicht/poids propre
View; toujours à l'intérieur

Ambient temperature; - °C (-20 bis +40°C)
Umgebungstemperatur/température ambiante

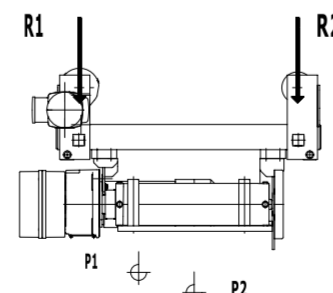
Design changes reserved
Konstruktionsänderungen vorbehalten/sous réserve de modifications de construction

Client Zentratrec SA de CV, Mexico
Kunde/client

Approved
Gegenmigt ort date firm(firm stamp)
approuver place date firme(cachet de firme)

Radlasten(mit Eigenlast): ohne Stoß und Beiwerte
pro Radpaar/ per pair of wheel/ par paire des roues
wheel load (with dead load): without shock and coefficients
poids des roues (avec poids propre): sans choc et coefficients

Traglast /S.W.L./force de levage 3200 kg



Hakenstellung P1/ hook position P1/ Position du crochet
R1 27 kN R2 11 kN

Hakenstellung P2/ hook position P2/ Position du crochet
R1 11 kN R2 27 kN

Eigengewicht 720 kg
dead weight/poids propre

Approved	Date	Owner department	Folder	Size	Total weight kg	Sheet
grund	2018-04-16	Order and Project Engineering		A2	750,64	1/1
Checked	Date	Title				
		EX-PROOF HOIST				
Designer	Date	Keywords				
grund	2018-04-13	SH 5032-16 1/1 L2 ex UE-S45				
		Product/Project reference	Item ID			
			70009787			
		Specification	Document ID			
		SH5032-16EX1/1-1L2UE-S45-148	70009787-DRW1			
			Rev			
			4			



This document and the information contained herein, is the exclusive property of STAHL CraneSystems GmbH and represents a non-public, confidential and proprietary trade secret that may not be reproduced, disclosed to third parties, altered or otherwise employed in any manner whatsoever without the express written consent of STAHL CraneSystems GmbH. © 2018 STAHL CraneSystems GmbH. All rights reserved.