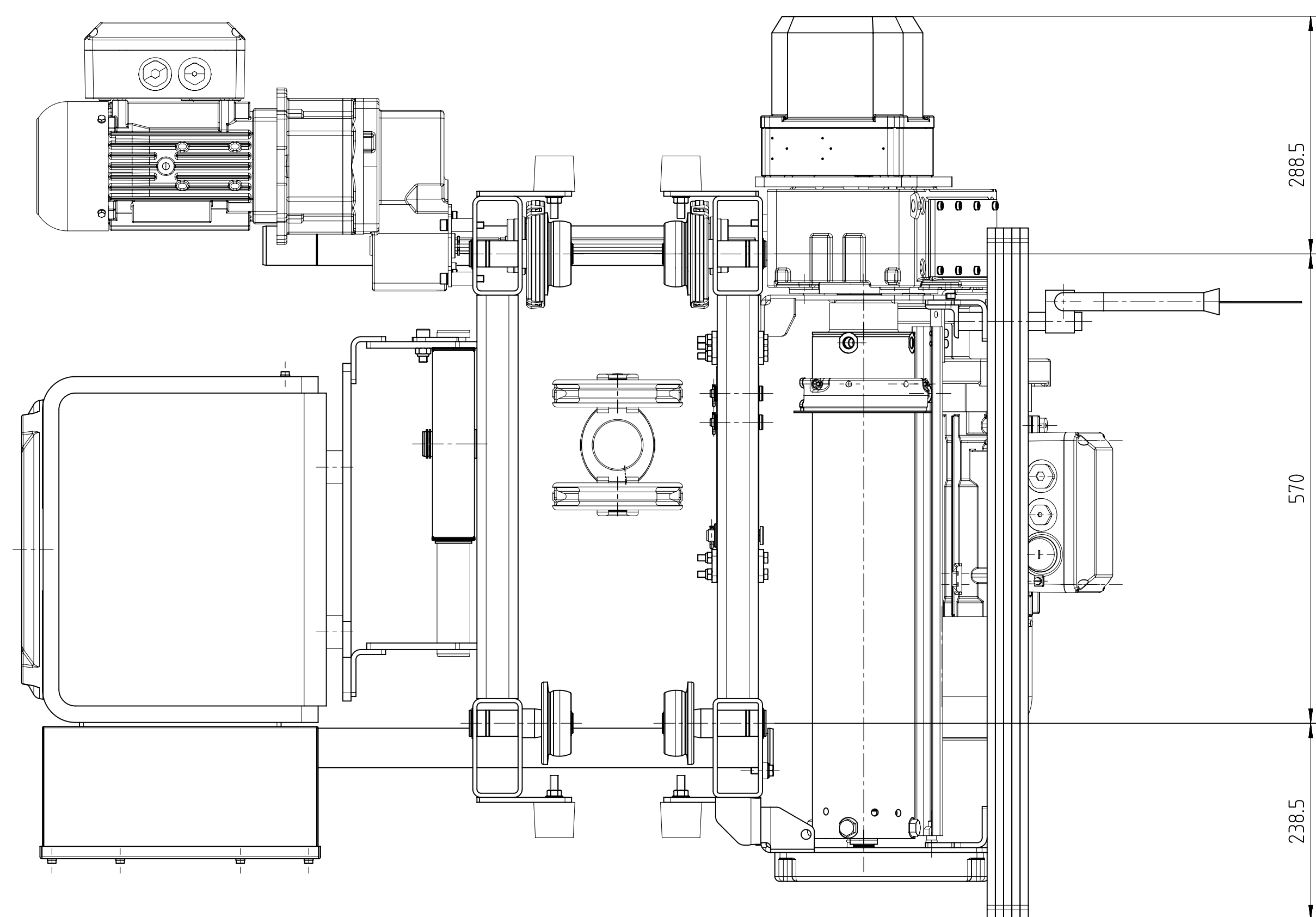
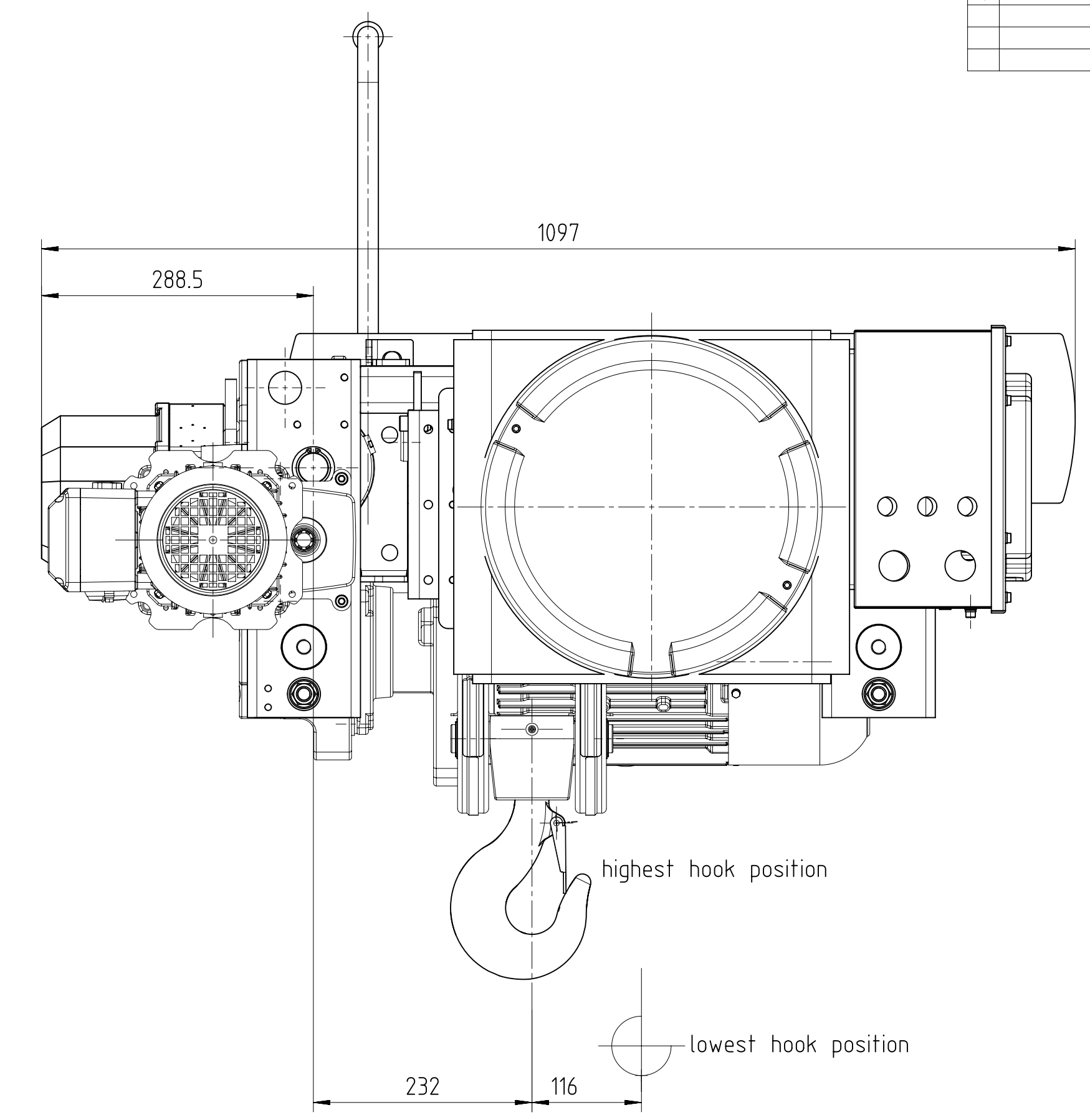
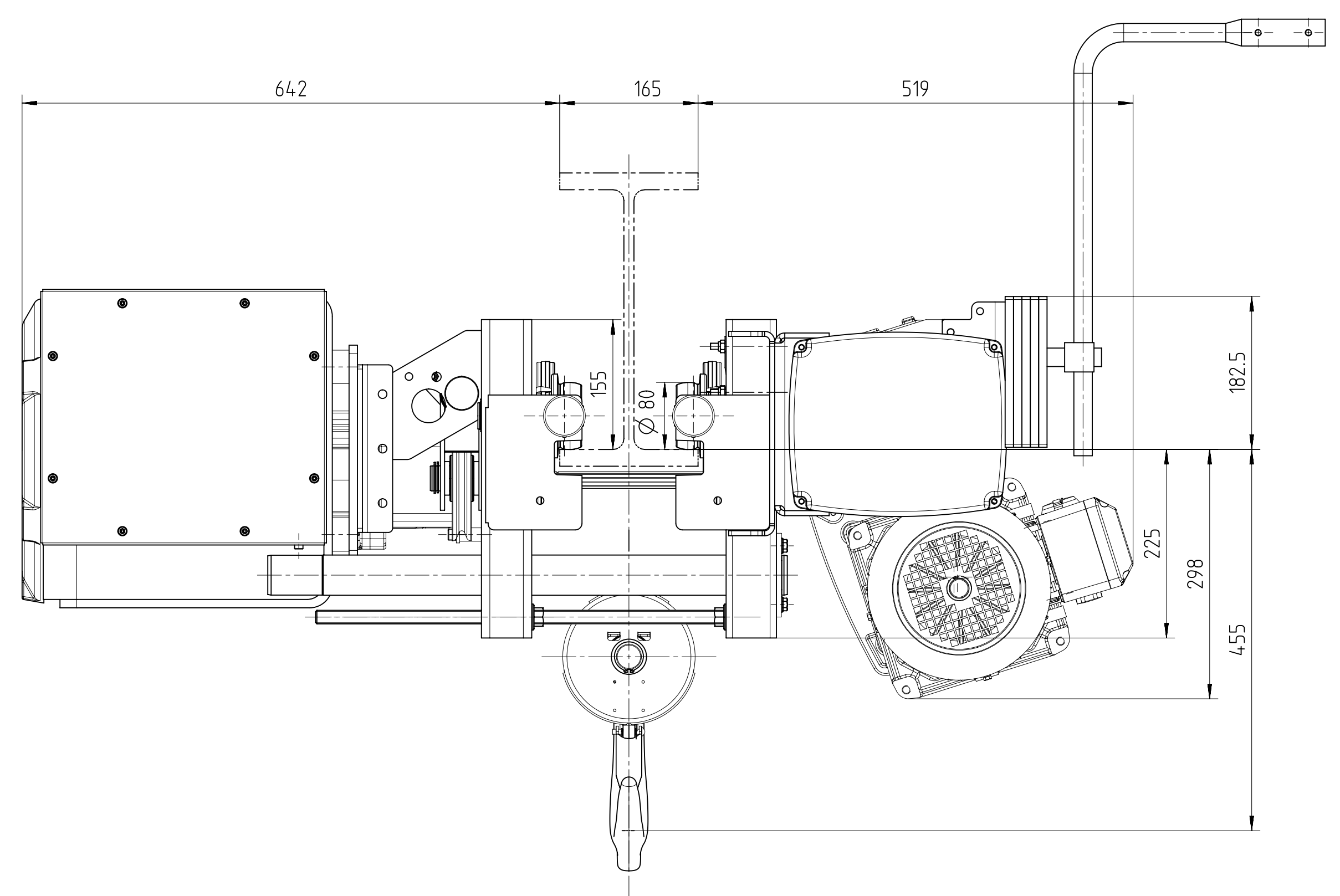


Rev	Description	ECN	Date	Revised by	Approved by
1	-		2018-04-25	grund	grund



Serial No. : 59 01 181  
 Fabrik-Nr.  
 Order No. : 256 10 120564 010  
 Auftrags-Nr.

STHL CraneSystems	Electric-wire-rope hoist	S.W.L. 2000 kg
Type SH 3005-18 L2ex	Electro-Seilzug patin électrique à câble	Traglast force de levage
Typ/Type	Length 2	Classification M6 (ISO)
Lifting Height 6,0 m	Rope Ø 7,0 mm	Hook Block H125-4
Höhenhöhe/hauteur de levage	Seil/cable	Haken/Hocheboutte
Hoist motor: Type 2/12A2/500 ex		
Hubmotor: Typ /moteur de levage		
Main hoisting speed: 5,50 m/min	2,40 kW	30%ED; 180 s/h
Haupthubgeschw./vitesse de levage principal		
Micro hoisting speed: 0,90 m/min	0,33 kW	15%ED; 180 s/h
Feinhubgeschw./vitesse de levage principal micro		
Carriage: Type KE-S33	Runway -	Bend radius - m
Fahrwerk /Typ/type de chariot	Laufb./la voie de roulement	Laufb./rayon roulement
Hoisting class H2	Stress group B3	to DIN 15018
Hubklasse/Klasse de levage:	Beanspruchungsgr./groupe de sollicitation	nach/secon
Drive motor: Type SF 17 213 503ex		
Fahrmotor /Typ/type du moteur de chariot		
1.Travel speed: 6,30 m/min	0,08 kW	20 %ED;
Fahrtgesch./vitesse de direction		
2.Travel speed: 25,0 m/min	0,39 kW	40 %ED;
Fahrtgesch./vitesse de direction		
Supply voltage	480 V;	60 Hz;
Betriebsspannung / voltage alimentation		
Control voltage 120 V; 60 Hz;	Mode of Protection IP 66 EN 60529	
Steuerspannung/tension de commande	Schutzart/Système de protection	
Explosion protection: Ex II 2D Ex tb IIC T120°C Db/Ex II 2D ck T120°C,		
Explosionsschutz / protection antidéflagrante		
Location: Always indoor	Dead Weight: 422 kg	
Standort: ständig in der Halle	Eigengewicht/poids propre	
View: toujours à l'intérieur		
Ambient temperature: - °C (-20 bis +40°C)		
Umgebungstemperatur/température ambiante		
Design changes reserved		
Konstruktionsänderungen vorbehalten/reserve de modifications de construction		
Client Zentratec SA de CV, Mexico		
Kundencient		
Approved		
Genehmigt	ort	date
approuver	place	date
		firm/firm stamp
		firm/cachet de firme

**Radlasten(mit Eigenlast):** ohne Stoß und Beiwerte  
**pro Radpaar/** per pair of wheel/ **par paire des roues**  
 wheel load (with dead load): without shock and coefficients  
 poids des roues (avec poids propre): sans choc et coefficients

**Traglast /S.W.L./force de levage 2000 kg**

**Hakenstellung P1/** hook position P1/ **Position du crochet**  
**R1 14 kN R2 10 kN**

**Hakenstellung P2/** hook position P2/ **Position du crochet**  
**R1 10 kN R2 14 kN**

**Eigengewicht** **422 kg**  
 dead weight/poids propre

Approved	Date	Owner department	Folder	Size	Total weight kg	Sheet
grund	2018-04-25	Order and Project Engineering		A1	406.23	1/1
Checked	Date	Title				Scale
		EX-PROOF HOIST				1:1
Designer	Date	Keywords				
grund		SH 3005-18 4/1 L2 ex KE-S33				
		Product/Project reference				
		70010322				
		Specification				
		SH3005-18EX4/1-1L2KE-S33-165				
		Document ID				
		70010322-DRW1				
		Rev				
		1				



This document and the information contained herein, is the exclusive property of STHL CraneSystems GmbH. It is not to be reproduced, stored in a retrieval system, or transmitted in any form or by any means, electronic, mechanical, photocopying, recording, or otherwise, without the prior written consent of STHL CraneSystems GmbH. © 2018 STHL CraneSystems GmbH. All rights reserved.