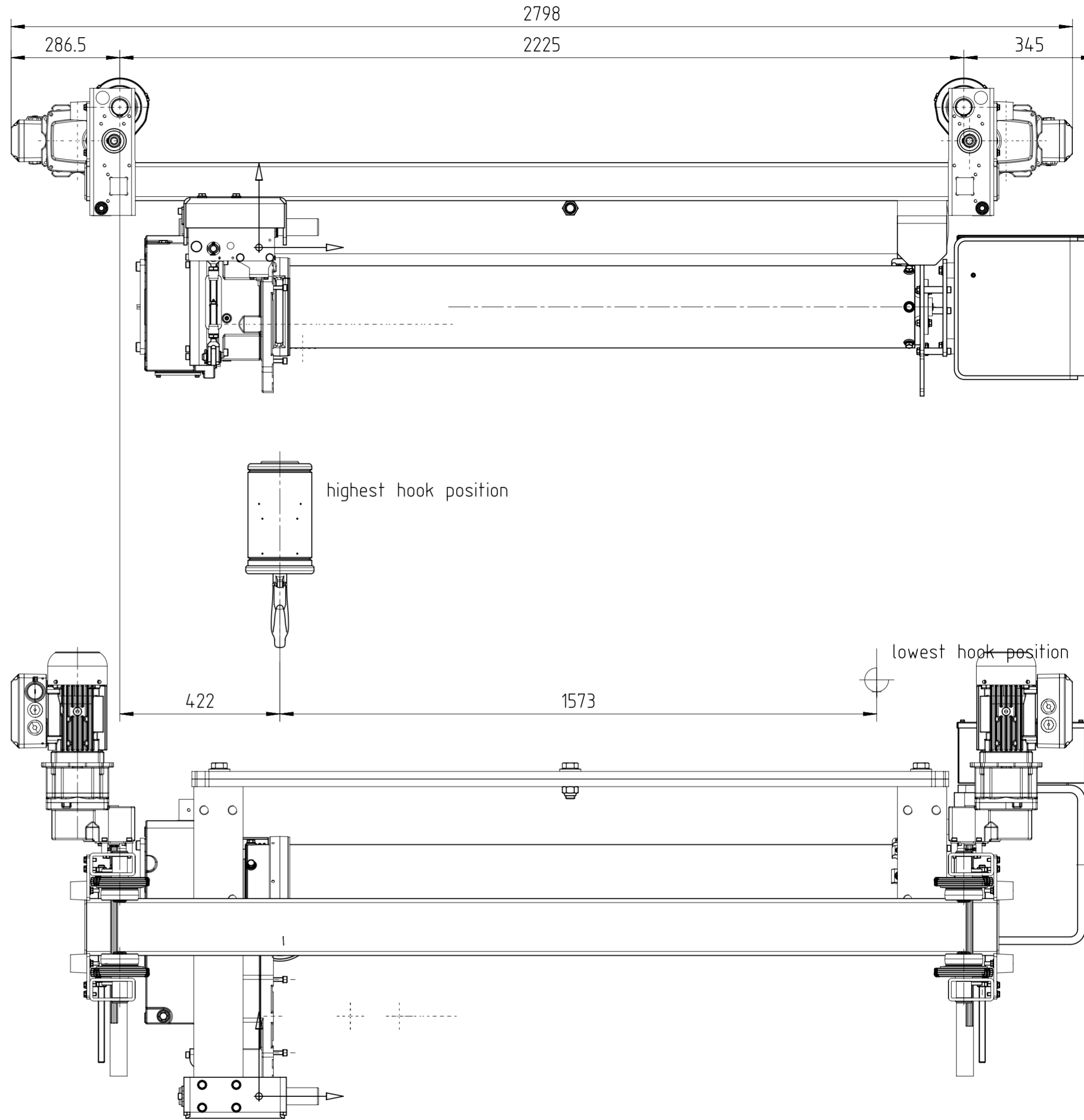
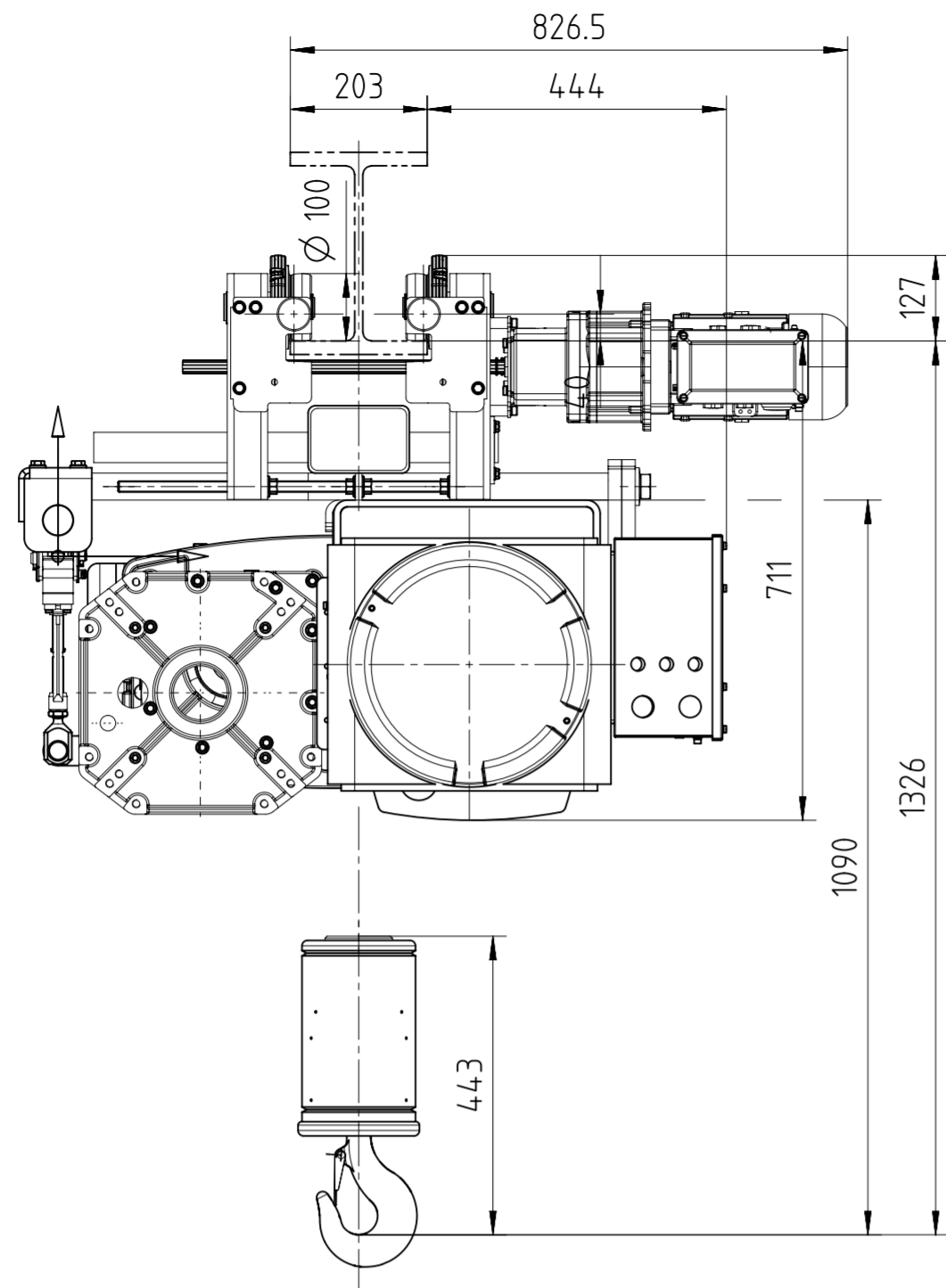


Rev	Description	ECN	Date	Revised by	Approved by
1	-		2018-04-24	grund	grund
2	-		2018-05-09	grund	grund
3	-		2019-01-22	grund	grund

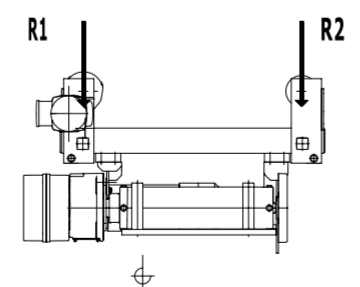


STAHL CraneSystems	Electric-wire-rope hoist Elektro-Seilzug palan électrique à câble	S.W.L. 3200 kg Traglast force de levage
Type SH 5032-16 1/1 ex Typ/type	Length 4 länge/longueur	Classification M4 (ISO) Einstufung/groupe
Lifting Height 80,0 m Hubhöhe/hauteur de levage	Rope Ø 12,0 mm seil/câble	Hook Block H190-1 Hakenflasche/moufle
Hoist motor: Type 2/12A4/512 ex Hubmotor: Typ /moteur de levage		
Main hoisting speed: 9,60 m/min Haupthubgeschw./vitesse de levage principal	5,70 kW	40%ED; 240 s/h
Micro hoisting speed: 1,60 m/min Feinhubgeschw./vitesse de levage principal/micro	0,82 kW	20%ED; 240 s/h
Carriage: Type UE-S45 Fahrwerk Typ/type de chariot	Runway - Laufb./la voie de roulement	Bend radius - m Laufb./Radius/rayon roulement
Hoisting class H2 Hubklasse/classe de levage;	Stress group B3 Beanspruchungsr./groupe de sollicitation	to DIN 15018 nach/selon
Drive motor: Type 2x SF 17 213 503ex Fahrmotor Typ/type du moteur de chariot		
1.Travel speed: 6,30 m/min Fahrgesch./vitesse de direction	2x 0,08 kW	20 %ED;
2.Travel speed: 25,0 m/min Fahrgesch./vitesse de direction	2x 0,39 kW	40 %ED;
Supply voltage Betriebsspannung / voltage alimentation	440 V;	60 Hz;
Control voltage Steuerspannung/tension de commande	120 V;	60 Hz;
Mode of Protection IP 66 EN 60529 Schutzart/système de protection		
Explosion protection: Ex II 2D Ex tb IIC T120°C Db/Ex II 2D ck T120°C Explosionsschutz / protection antidéflagrante		
Location: Always indoor Standard; ständig in der Halle View; toujours à l'intérieur	Dead Weight; Eigengewicht/poids propre	1100 kg
Ambient temperature: Umgebungstemperatur/température ambiante		
- °C (-20 bis +40°C)		
Design changes reserved Konstruktionsänderungen vorbehalten/réserve de modifications de construction		
Client Zentrotec SA de CV, Mexico Kunde/client		
Approved		
Genehmigt approuver	ort place	date date
		firm(firm stamp) firme(cachet de firme)

Serial No.	: 79 01 966
Order No.	: 256 10 120565 020

**Radlasten(mit Eigenlast): ohne Stoß und Beiwerte**  
**pro Radpaar/ per pair of wheel/ par paire des roues**  
 wheel load (with dead load): without shock and coefficients  
 poids des roues (avec poids propre): sans choc et coefficients

**Traglast /S.W.L./force de levage 3200 kg**



**R1 max. 33,36 kN R2 max. 3,97 kN**

**Eigengewicht 1100 kg**  
 dead weight/poids propre

Approved grund	Date 2018-04-24	Owner department Order and Project Engineering	Folder	Size A2	Total weight kg 90182	Sheet 1/1
Checked	Date	Title EX-PROOF HOIST				Scale 1:10
Designer grund	Date 2018-04-24	Keywords SH 5032-16 1/1 L4ex UE-S45				
Product/Project reference			Item ID 70010297	Rev 3		
Specification SH5032-16EX1/1-L4UE-S45-203			Document ID 70010297-DRW1			



This document and the information contained herein, is the exclusive property of STAHL CraneSystems GmbH and represents a non-public, confidential and proprietary trade secret that may not be reproduced, disclosed to third parties, altered or otherwise employed in any manner whatsoever without the express written consent of STAHL CraneSystems GmbH. © 2018 STAHL CraneSystems GmbH. All rights reserved.