

Replacement Parts Manual



Serial Number:

Order No.

BULLETIN HP-57

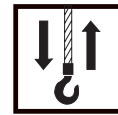
Bulletin HP-57 - - 01/07
Applicable to Serial Numbers G_-00001 and up
MORRIS MATERIAL HANDLING
TECHNICAL PUBLICATIONS
1-800-933-3001





Notes





Hoist motor	4
Gear	11
Rope drum	14
Rope suspension	16
Bottom hook block	18
Control panel	24
Control	25
Trolley	26
Travel drives	29
Torque support	49

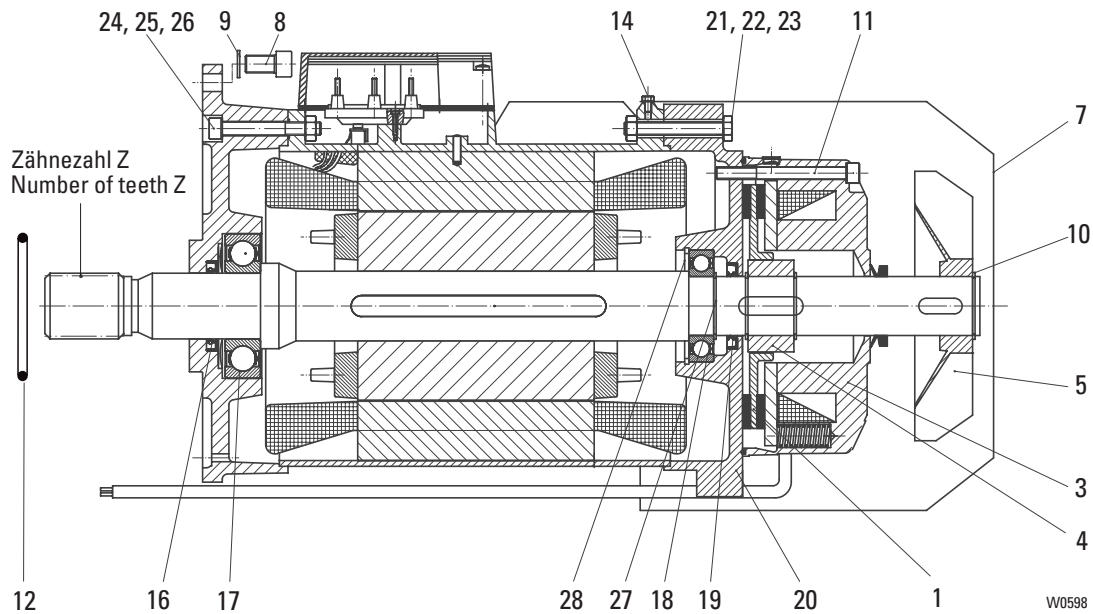
Replacement and repairs may only be carried out by trained personnel.

The information in the column "Designation" is only for internal use.

Please always state hoist serial number.



Motor
12/2H71



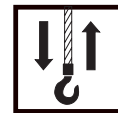
item	Part-Number	Piece	Description	Designation
	indicate hoist serial no	1	1)	Motor
1	P0013234	1	RSM S	Brake rotor
3	P0013235	1	104 - 120V	2) 220 - 460V 50Hz 3) Brake
	P0013236	1	130 - 150V	2) 480 - 525V 50Hz 3)
	P0013237	1	156 - 180V	2) 575 - 720V 50Hz 3)
4	P0013238	1		Hub
5	P0013239	1		Fan wheel
7	P0013240	1		Fan cowling
8	P0013241	4	M12x35	ISO 4762-8.8
9	P0013242	4	S12	Socket head cap screw
10	P0013243	1	45x1,75	DIN 471
11	P0013244	3	M8x80	ISO 4762-8.8
12	P0013245	1	95x2	NB 70
14	P0013246	4	AM 5x10	ISO 7045-4.8
16	P0013247	1	A50x68x8	4) DIN 3760
17	P0013248	1	6310-2ZJC3	4) DIN 625
18	P0013249	1	6209-2ZJC3	DIN 625
19	P0013250	1	A45x65x8	DIN 3760
20	P0013251	1		Motor cover
21	P0013252	4	M10x75	ISO 4014
22	P0013253	4	10	Hexagon head cap screw
23	P0011243	4	M10	ISO 4032-8
24	P0010637	4	M10x80	ISO 4762-8.8
25	P0013189	4	10	Socket head cap screw
26	P0011243	4	M10	ISO 4032
27	P0011061	1	45x1,75	DIN 471
28	P0011068	1	85x3	DIN 472

1) Always included item 12 in order

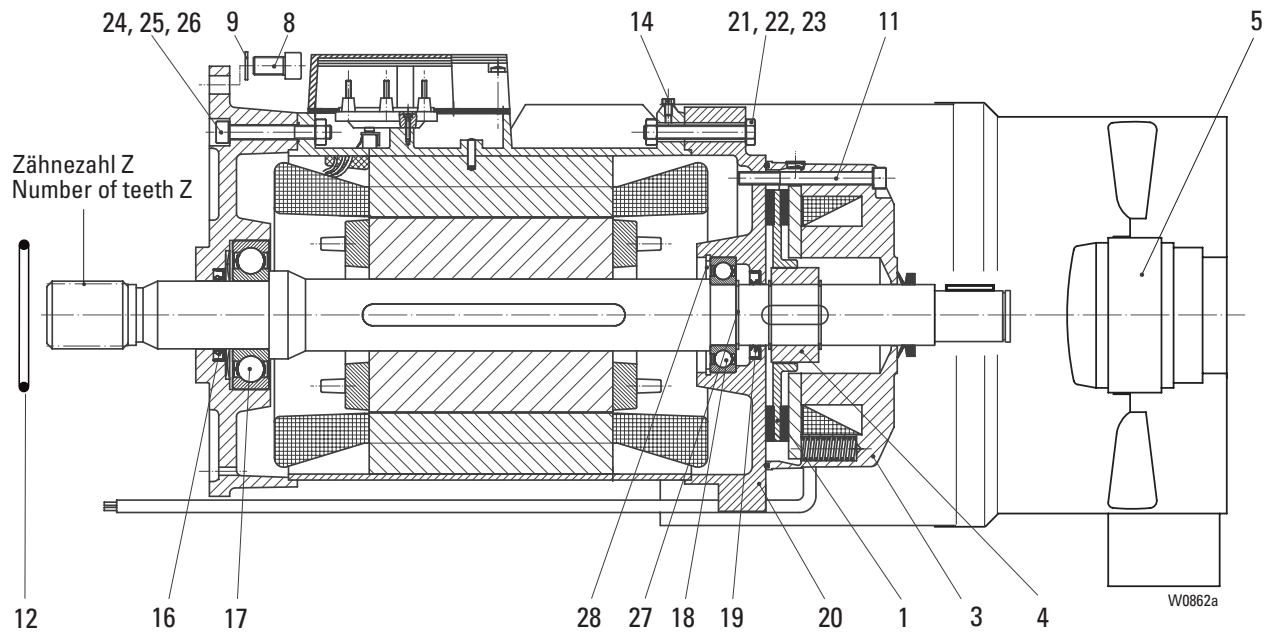
2) Coil voltage

3) Operating voltage motor

4) Only replaceable at drum speed 12,5 - 25m/min. Z =13



Motor
4H71 (Forced ventilation)



Pos	Teil-Nummer Part-Number	Stück Piece	Beschreibung Description	Designation
	indicate hoist serial no	1	1)	Motor
1	P0013235	1	RSM H	Brake rotor
3	P0013243	1	104 - 120V	2) 220 - 240V 50Hz 3) Brake
	P0013244	1	180 - 207V	2) 380 - 460V 50Hz 3)
4	P0013236	1		Hub
5	P0013341	1		Forced ventilation
8	P0010567	4	M12x35	ISO 4762-8.8 Socket head cap screw
9	P0011192	4	S12	Locking disc
11	P0010663	3	M8x80	ISO 4762-8.8 Screw
12	P0011998	1	95x2	NB 70 Round sealing ring
14	P0010986	4	AM 5x10	DIN EN ISO 7045-4.8 Lenshead screw
16	P0013194	1	A50x68x8	DIN 3760 Shaft seal
17	P0012584	1	6310-2ZJC3	4) DIN 625 Roller bearing
18	P0012581	1	6209-2ZJC3	DIN 625 Roller bearing
19	P0013196	1	A45x65x8	DIN 3760 Shaft seal
20	P0013200	1		Motor cover
21	P0010556	4	M10x75	ISO 4014 Hexagon head cap screw
22	P0013189	4	10	Spring washer
23	P0011243	4	M10	ISO 4032-8 Nut
24	P0010637	4	M10x80	ISO 4762-8.8 Socket head cap screw
25	567 241 0	4	10	Spring washer
26	506 984 0	4	M10	ISO 4032 Nut
27	P0011061	1	45x1,75	DIN 471 Locking ring
28	P0011068	1	85x3	DIN 472 Locking ring

1) Always included item 12 in order

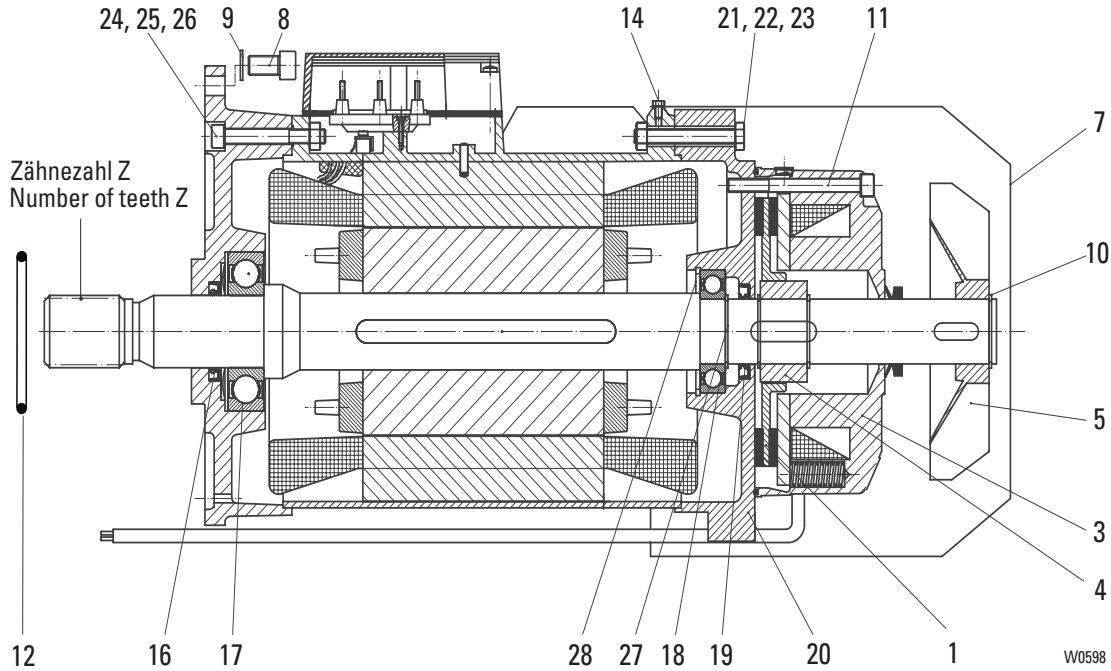
2) Coil voltage

3) Operating voltage motor

4) Only replaceable to drum speed 12,5m/min. Z =13

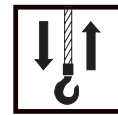


Motor
12/2H72

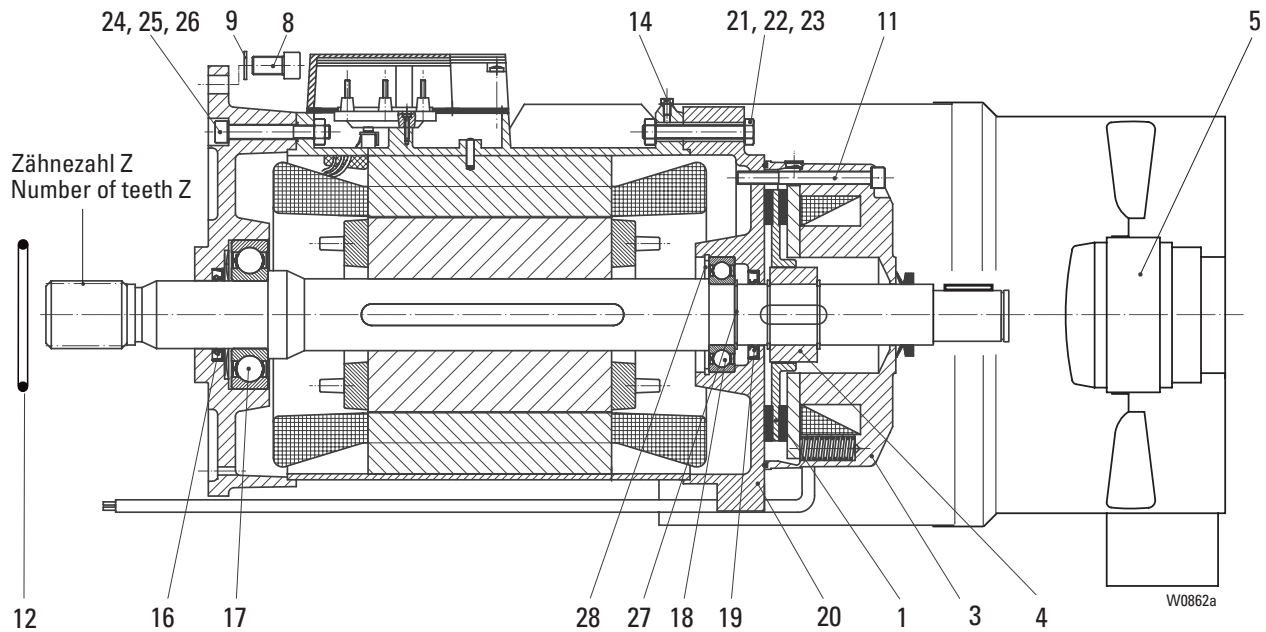


Item	Part-Number	Piece	Description	Designation	
	indicate hoist serial no	1	1)	Motor	
1	P0013087	1	RSM S	Brake rotor	
3	P0013089	1	104 - 120V	2) 220 - 460V 50Hz 3)	Brake
	P0013091	1	130 - 150V	2) 480 - 525V 50Hz 3)	
	P0013093	1	156 - 180V	2) 575 - 720V 50Hz 3)	
4	P0013219	1		Hub	
5	P0013145	1		Fan wheel	
7	P0013172	1		Fan cowling	
8	P0010567	4	M12x35	DIN 912-8.8	Socket head cap screw
9	P0011192	4	S12		Locking disc
10	P0011061	1	45x1,75	DIN 471	Locking ring
11	P0010554	3	M8x100	ISO 4762-8.8	Screw
12	P0011998	1	95x2	NB 70	Round sealing ring
14	P0010986	4	AM 5x10	DIN EN ISO 7045-4.8	Lenshead screw
16	P0013194	1	A50x68x8	4) DIN 3760	Shaft seal
17	P0012584	1	6310-2ZJC3	4) DIN 625	Roller bearing
18	P0012581	1	6209-2ZJC3	DIN 625	Roller bearing
19	P0013196	1	A45x65x8	DIN 3760	Shaft seal
20	P0013201	1			Motor cover
21	P0010556	4	M10x75	ISO 4014	Hexagon head cap screw
22	P0013189	4	10		Spring washer
23	P0011243	4	M10	ISO 4032-8	Nut
24	P0010637	4	M10x80	ISO 4762-8.8	Socket head cap screw
25	567 241 0	4	10		Spring washer
26	506 984 0	4	M10	ISO 4032	Nut
27	P0011061	1	45x1,75	DIN 471	Locking ring
28	P0011068	1	85x3	DIN 472	Locking ring

- 1) Always included item 12 in order
- 2) Coil voltage
- 3) Operating voltage motor
- 4) Only replaceable at drum speed 12,5 - 25m/min. Z = 13



**Motor
4H72 (Forced ventilation)**



Item	Part-Number	Piece	Description	Designation	
	indicate hoist serial no		1)	Motor	
1	P0013235	1	RSM H	Brake rotor	
3	P0013245	1	104 - 120V	2) 220 - 240V 50Hz 3) Brake	
	P0013246	1	180 - 207V	2) 380 - 460V 50Hz 3)	
4	P0013236	1		Hub	
5	P0013341	1		Forced ventilation	
8	P0010567	4	M12x35	ISO 4762-8.8	Socket head cap screw
9	P0011192	4	S12		Locking disc
11	P0010554	3	M8x100	ISO 4762-8.8	Screw
12	P0011998	1	95x2	NB 70	Round sealing ring
14	P0010986	4	AM 5x10	DIN EN ISO 7045-4.8	Lenshead screw
16	P0013194	1	A50x68x8	4) DIN 3760	Shaft seal
17	P0012584	1	6310-2ZJC3	4) DIN 625	Roller bearing
18	P0012581	1	6209-2ZJC3	DIN 625	Roller bearing
19	P0013196	1	A45x65x8	DIN 3760	Shaft seal
20	P0013201	1			Motor cover
21	P0010556	4	M10x75	ISO 4014	Hexagon head cap screw
22	P0013189	4	10		Spring washer
23	P0011243	4	M10	ISO 4032-8	Nut
24	P0010637	4	M10x80	ISO 4762-8.8	Socket head cap screw
25	5672410	4	10		Spring washer
26	506 984 0	4	M10	ISO 4032	Nut
27	P0011061	1	45x1,75	DIN 471	Locking ring
28	P0011068	1	85x3	DIN 472	Locking ring

1) Always included item 12 in order

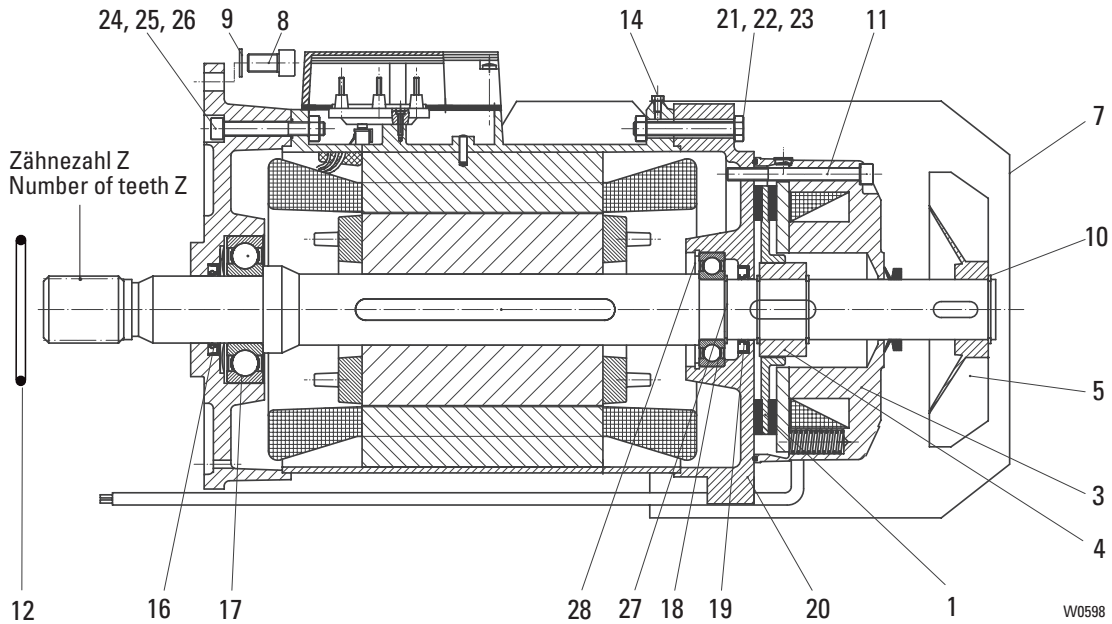
2) Coil voltage

3) Operating voltage motor

4) Only replaceable to drum speed 12,5 - 25m/min. Z = 13

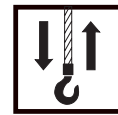


Motor
12/2H73

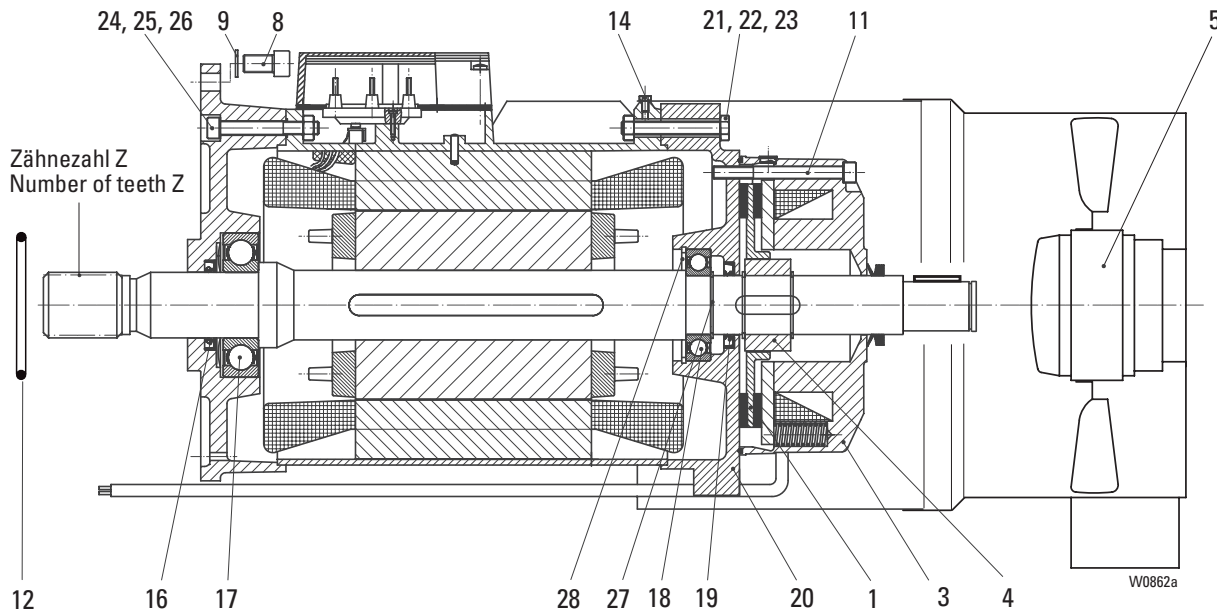


Item	Part-Number	Piece	Description	Designation
	indicate hoist serial no	1	1)	Motor
1	P0013087	1	RSM S	Brake rotor
3	P0013155	1	220 - 460V 50Hz	Brake
	P0013174	1	130 - 150V	
	P0013168	1	156 - 180V	
4	P0013236	1		Hub
5	P0013145	1		Fan wheel
7	P0013172	1		Fan cowling
8	P0010563	4	M12x30	Socket head cap screw
9	P0011192	4	S12	Locking disc
10	P0011061	1	45x1,75	Locking ring
11	P0010554	1	M8x100	Screw
12	P0011998	1	95x2	Round sealing ring
14	P0010986	4	AM 5x10	Lenshead screw
16	P0013194	1	A50x68x8	Shaft seal
17	P0012584	1	6310-2ZJC3	Roller bearing
18	P0012581	1	6209-2ZJC3	Roller bearing
19	P0013196	1	A45x65x8	Shaft seal
20	P0013201	1		Motor cover
21	P0010650	4	M10x120	Hexagon head cap screw
22	P0013189	4	10	Spring washer
23	P0011243	4	M10	Nut
24	P0010637	4	M10x80	Socket head cap screw
25	5672410	4	10	Spring washer
26	506 984 0	4	M10	Nut
27	P0011061	1	45x1,75	Locking ring
28	P0011068	1	85x3	Locking ring

- 1) Always included item 12 in order
- 2) Coil voltage
- 3) Operating voltage motor
- 4) Only replaceable at drum speed 12,5 - 25m/min. Z = 13



Motor
4H73 (Forced ventilation)



Item	Part-Number	Piece	Description	Designation
		1	1)	Motor
1	P0013275	1	RSM S	Brake rotor
3	P0013160	1	104 - 120V	2) 220 - 240V 50Hz 3) Brake
	P0013169	1	180 - 207V	2) 380 - 460V 50Hz 3)
4	P0013236	1		Hub
5	P0013341	1		Forced ventilation
8	P0010567	4	M12x35	DIN 912-8.8 Socket head cap screw
9	P0011192	4	S12	vz Locking disc
11	P0010554	1	M8x100	ISO 4762-8.8 Screw
12	P0011998	1	95x2	NB 70 Round sealing ring
14	P0010986	4	AM 5x10	4) DIN EN ISO 7045-4.8 Lenshead screw
16	P0013194	1	A50x68x8	4) DIN 3760 Shaft seal
17	P0012584	1	6310-2ZJC3	DIN 625 Roller bearing
18	P0012581	1	6209-2ZJC3	DIN 625 Roller bearing
19	P0013196	1	A45x65x8	DIN 3760 Shaft seal
20	P0013201	1		Motor cover
21	P0010650	4	M10x120	ISO 4014 Hexagon head cap screw
22	P0013189	4	10	Spring washer
23	P0011243	4	M10	ISO 4032-8 Nut
24	P0010637	4	M10x80	ISO 4762-8.8 Socket head cap screw
25	P0013189	4	10	Spring washer
26	P0011243	4	M10	ISO 4032 Nut
27	P0011061	1	45x1,75	DIN 471 Locking ring
28	P0011068	1	85x3	DIN 472 Locking ring

1) Always included item 12 in order

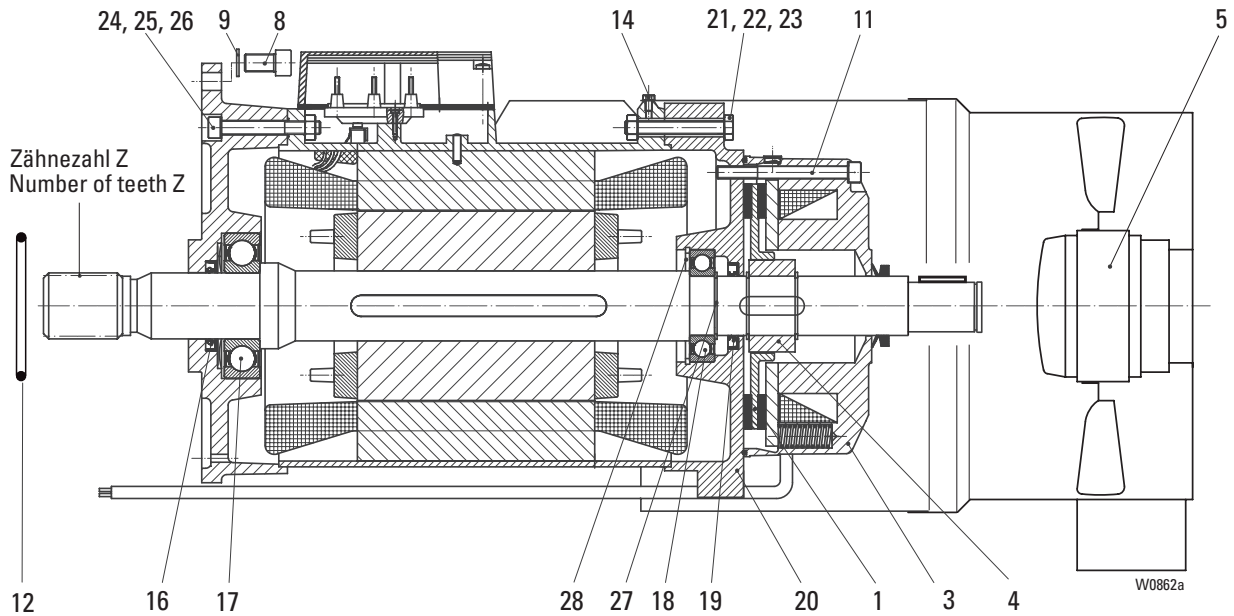
2) Coil voltage

3) Operating voltage motor

4) Only replaceable to drum speed 12,5m/min. Z = 13



**Motor
4H82 (Forced ventilation)**

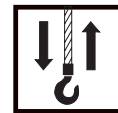


Pos	Part-Number	Piece	Description	Designation
	indicate hoist serial no	1	1)	Motor
1	P0013276	1	RSM S	Brake rotor
3	P0013161	1	104 - 120V	Brake
	P0013170	1	180 - 207V	
4	P0013220	1		Hub
5	P0013342	1		Forced ventilation
8	500 153 0	8	M16x40	Socket head cap screw
9	P0011250	8	S16	Locking disc
11	P0010689	3	M10x110	Socket head cap screw
12	P0011998	1	95x2	Round sealing ring
13	P0010555	1	M6x50	Socket head cap screw
14	567 239 0	4	M8/D10x8	Hexagon head cap screw
16	P0013195	1	A65x85x10	Shaft seal
17	560 099 0	1	6213-ZJC3	Roller bearing
18	P0012616	1	6210-ZJC3	Roller bearing
19	P0012795	1	A50x72x8	Shaft seal
20	567 260 0	1		Motor cover
21	P0010720	4	M10x65	Socket head cap screw
22	567 243 0	4	10	Spring washer
23	P0011120	4	M10	Nut
24	P0010637	4	M10x80	Socket head cap screw
25	P0013189	4	10	Spring washer
26	P0011120	4	M10	Nut

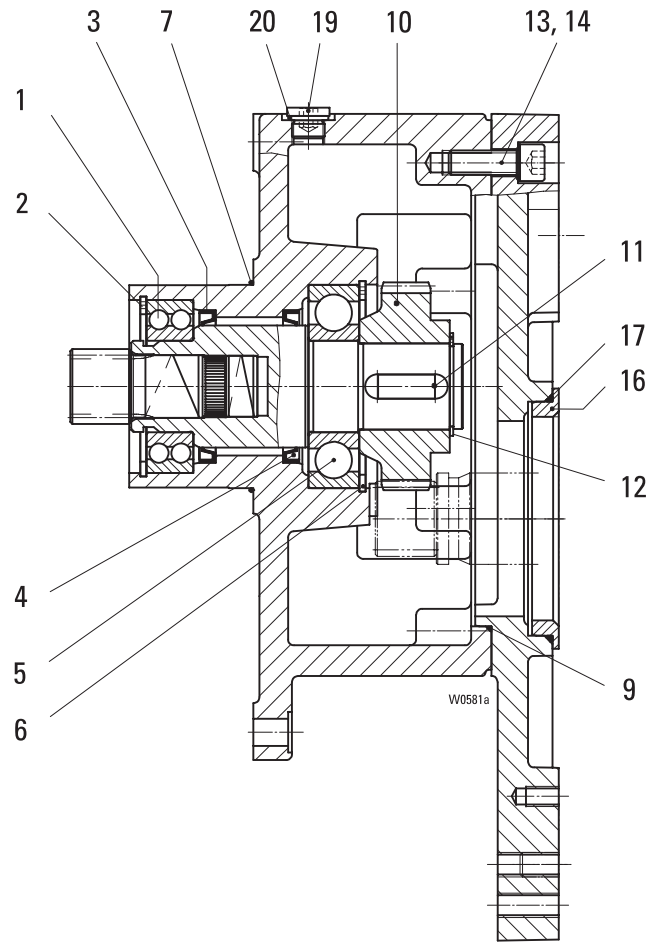
1) Always included item 12 in order

2) Coil voltage

3) Operating voltage motor



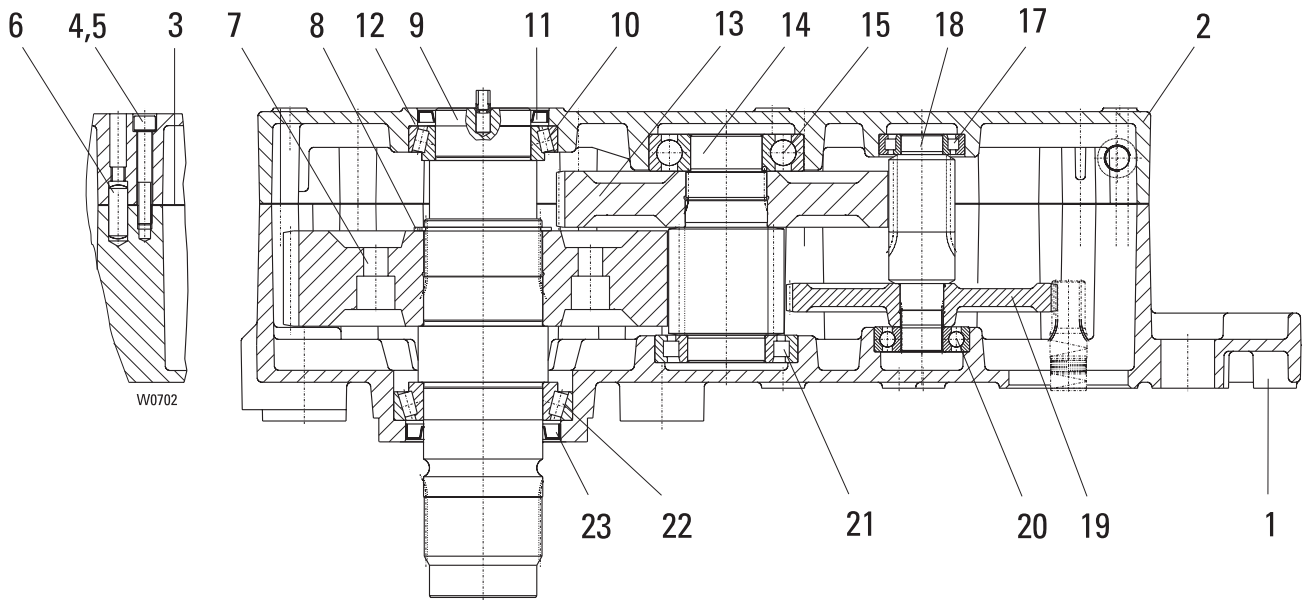
Intermediate gear



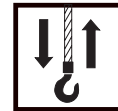
Item	Part-Number	Piece	Description	Designation
	indicate hoist serial no	1		Intermediate gear
1	P0012619	1	4209A	Grooved ball bearing
2	P0011068	1	85x3	Locking ring
3	P0012797	1	60x75x8 NB	Shaft seal
4	561 109 0	1	60x75x8 NB	Shaft seal
5	P0012553	1	6309	Grooved ball bearing
6	P0011122	1	100x3	Locking ring
7	P0011998	1	95x2	Round sealing ring
9	P0012087	1	230x2	Round sealing ring
10	25 273 26 11 0	1	NB 70	Gear wheel
11	537 026 0	1	A12x8x40	Feather key
12	P0011113	1	42x1,75	Locking ring
13	P0010567	8	M12x35	Socket head cap screw
14	P0011192	1	S 12	Lock washer
16	25 273 01 49 0	1	vz	Eccentric ring
17	P0012097	4	115x3	Round sealing ring
19	P0010810	4	AM16x1,5	Locking bolt
20	P0011988	4	C16x20	Sealing ring



Gear



Item	Part-Number	Piece	Description	Designation
	indicate hoist serial no	1		Gear
1	26 273 03 01 0	1		Gear box
2	26 273 01 02 0	1		Gear cap
3	P0006079	1		Seal
4	500 383 0	12	M12x80	Socket head cap screw
5	P0011192	12	S12	Lock washer
6	P0010950	2	16m6x40	DIN 7 Dowel pin
7	26 273 00 11 0	1		Gear wheel
8	506 253 0	1	100x3	DIN 471 Retainer ring
9	P0006068	1		Drive shaft
10	P0012569	1	320 16X	DIN 720 Bearing
11	P0012798	1	80x110x10	NB Shaft seal
12	506 195 0	1	110x125x0,3	1) Adjusting washer
	506 196 0	1	110x125x0,2	1)
13	indicate hoist serial no	1	z=88	gear wheel



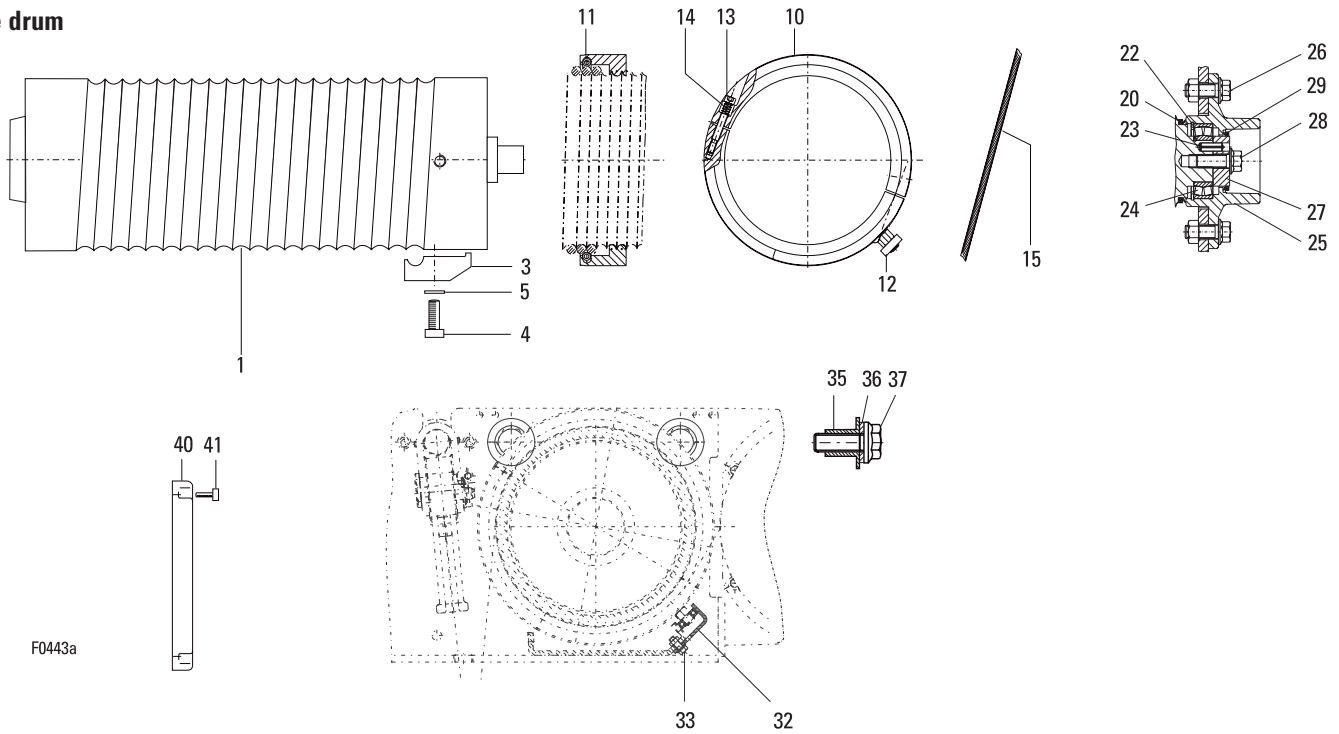
Item	Part-Number	Piece	Description	Designation	
14	indicate hoist serial no	1	z=13	Pinion shaft	
15	P0012575	1	6313	DIN 625	Grooved ball bearing
17	P0012608	1	NJ 207 EC	DIN 5412	Cylindrical roller bearing
18	indicate hoist serial no	1	z=15 z=14		Pinion shaft
19	indicate hoist serial no	1	z=94 z=90 z=71 z=64 z=55		Gear wheel
20	P0012563	1	6307	DIN 625	Grooved ball bearing
21	P0012597	1	NJ 213 E	DIN 5412	Cylindrical roller bearing
22	P0012651	1	320 20X	DIN 720	Bearing
23	P0012824	1	100x130x13	NB	Shaft seal

Without gear oil: amount required see operating manual.

1) As required

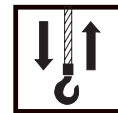


Rope drum

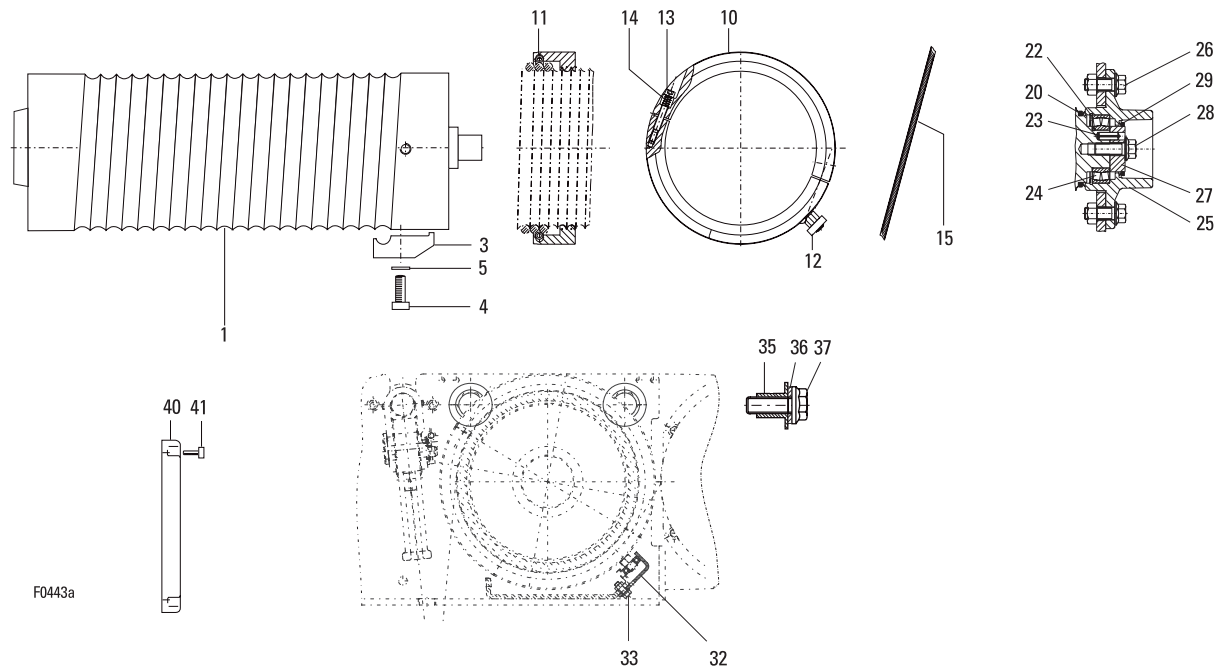


F0443a

Item	Part-Number	Piece	Description			Designation
1	P0002546	1	d20	D2	.PS	Rope drum
	P0002555	1	d20	D3	.PS	
	P0002563	1	d20	D4	.PS	
	P0002568	1	d20	D5	.PS	
	P0002571	1	d16	D2	.PS	
	P0002575	1	d16	D3	.PS	
	P0002578	1	d16	D4	.PS	
	P0002583	1	d16	D5	.PS	
	P0002586	1	d14	D2	.PS	
	P0002589	1	d14	D3	.PS	
	P0002591	1	d14	D4	.PS	
	P0002592	1	d14	D5	.PS	
	P0002593	1	d12,5	D2	.PS	
	P0002594	1	d12,5	D3	.PS	
	P0002595	1	d12,5	D4	.PS	
	P0002597	1	d12,5	D5	.PS	
1	P0002598	1	d12,5	D2	.PD	Rope drum
	P0002600	1	d12,5	D3	.PD	
	P0002602	1	d12,5	D4	.PD	
	P0002603	1	d12,5	D5	.PD	
3	P0009996	4	d20	(Item 4+5)	Clamping plate	
4	P0010564	4	M16x35	DIN 912-8.8	Socket head cap screw	
5	P0011250	4	S 16		Locking disc	
3	643000460	4	d16	(Item 4+5)	Clamping plate	
4	500 812 0	4	M16x35	DIN 6912-8.8	Socket head cap screw	
5	507 001 0	4	S 16		Locking disc	
3	P0002350	4	d12,5	(Item 4+5)	Clamping plate	
4	P0010661	4	M12x25	DIN 6912-8.8	Socket head cap screw	
5	P0011192	4	S 12		Locking disc	



Rope drum

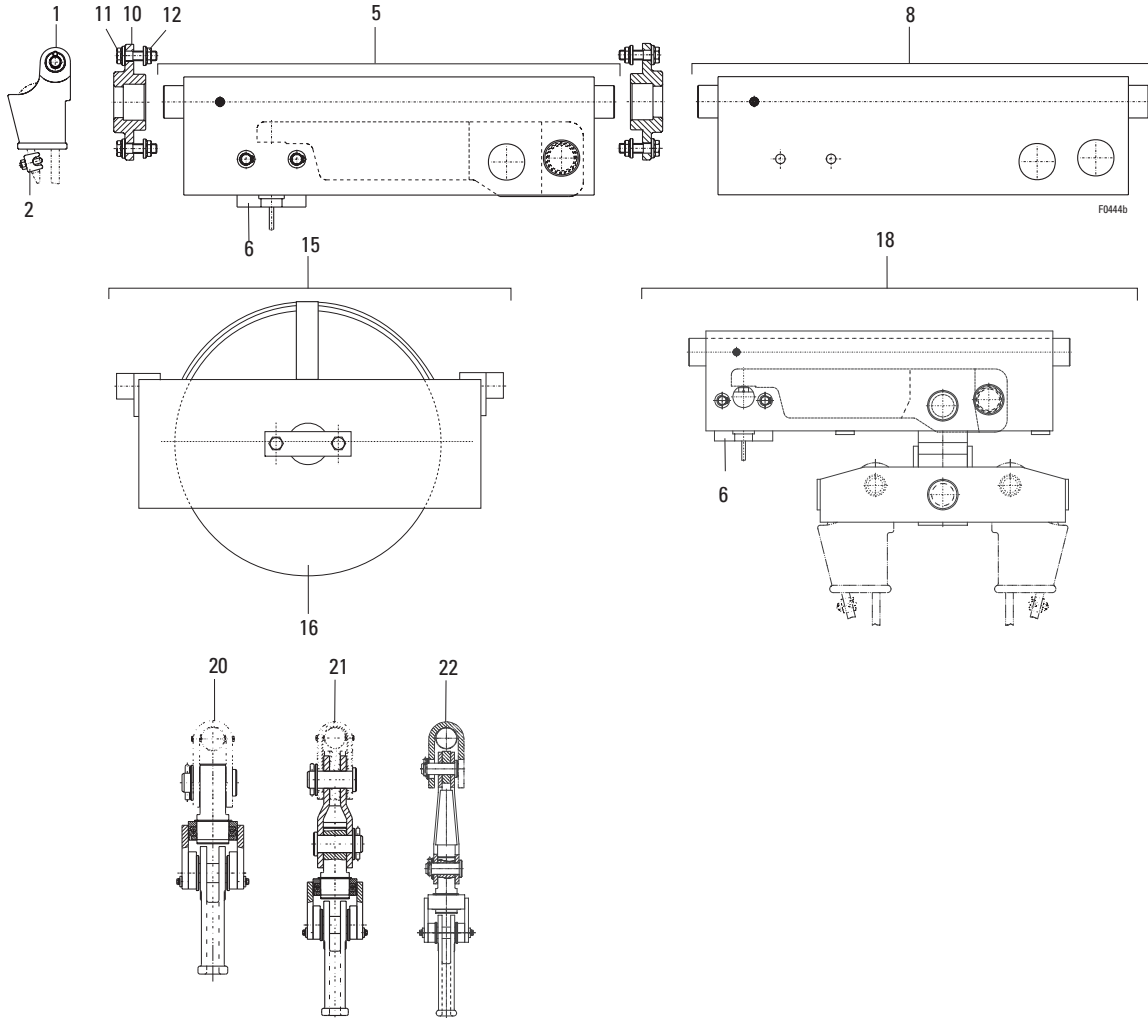


Item	Part-Number	Piece	Description	Designation
10	P0002569	1	d20 .PS (Item 11-14)	Rope guide
	P0002564	1	d16 .PS (Item 11-14)	
	P0002556	1	d14 .PS (Item 11-14)	
	P0002547	1	d12,5 .PD 1) (Item 11-14)	
	P0002572	1	d12,5 .PD 2)	
11	P0002645	1		Tension spring
12	P0002557	1		Guide part
13	P0005757	2		Screw
14	P0010819	2		Pressure spring
15			3)	Wire rope
20	P0012193	1		Sealing ring
22	560 079 0	1	222 10 E DIN 1473	Pendulum roller bearing
23	P0010926	1	10x28	Dowel pin
24	P0011094	1	90x3 V	Locking ring
25	P0002646	1		Drum bearing
26	P0010732	3	M16x40-10	Safety bolt
27	P0002638	1		Holding disc
28	501 033 0	1	M16x40-10	Safety bolt
29	P0012197	1		Sealing ring
32	P0002640	1	D2	Guide rail
	P0002641	1	D3	
	P0002642	1	D4	
	P0002643	1	D5	
33	P0010754	9		Safety bolt
35	06 432 00 50 0	1		Bushing
36	507 085 0	1	S30	Locking disc
37	P0010581	1	M30x100	Hexagon head cap screw
40	P0002451	1		End cap
41	P0010985	4	M6x20 DIN 7516	Screw

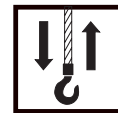
1) Rope guide left thread
2) Rope guide right thread
3) See data sheet



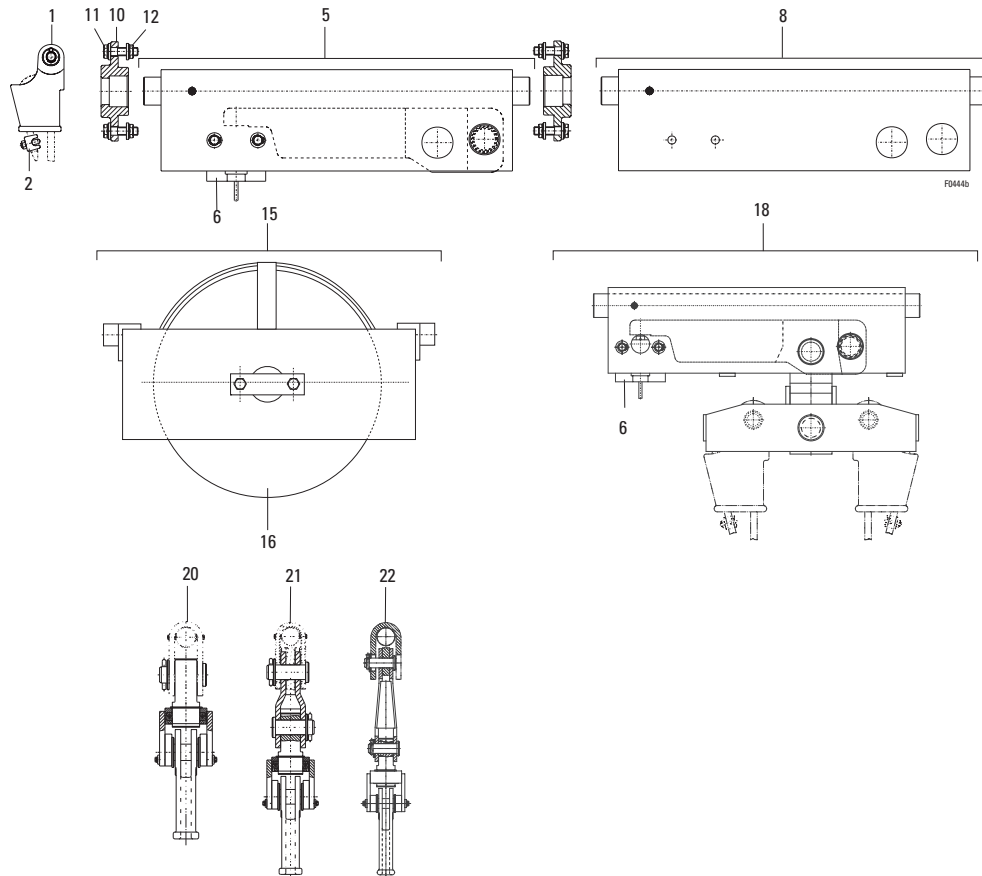
Rope suspension



Item	Part-Number	Piece	Description	Designation
1	P000997	1	d20 .PS GE	Clamp
	P0009719	1	d15 .PS GE	
	P0002549	1	d11,9-12,5 .PD GE/GD	
2	P0012115	1	d12-12,5 Size 13 GD	Wire rope clamp
	P0012116	1	d14-15 Size 16 GD	
	P0012132	1	d20 Size 22 GE	
5	GE			Load sensor compl.
	06 430 36 83 0	1	LET 1-440 (Item 6) 900 - 1400 [daN]	
	P0002616	1	LET 1-700 (Item 6) 1401 - 2900 [daN]	
	P0002619	1	LET 1-1200 (Item 6) 2901 - 4000 [daN]	
	GD			
	06 430 36 83 0	1	LET 1-440 (Item 6) 900 - 1400 [daN]	
6	P0002585	1	LET 1-440	Senso
	P0002588	1	LET 1-700	
	P0002580	1	LET 1-1200	



Rope suspension



Item	Part-Number	Piece	Description	Designation
8	P0010187	1	GE	Rope suspension
	06 430 02 28 0	1	GD	
10	P0002637	GE	x)	Bearing pedestal
	06 432 07 12 0	GD	x)	
11	P0010752	M12x40	x)	Safety bolt
12	P0011330	M12	x)	Locknut
15	P0009988	1	GE (Item 6)	Deflection cross bar
16	P0005859	1	GE	Rope pulley
15	P0002554	1	GD (Item 6)	Deflection cross bar
16	P0001354	1	GD	Rope pulley
18	P0002630	1	LET 1-440 (Item 6)	Suspension
	P0002623	1	LET 1-700 (Item.6)	
	P0002626	1	LET 1-1200 (Item.6)	
20	P0010122	1	GE	Anti twist device
21	P0010130	1	GE	Anti twist device
22	P0002577	1	GD	Anti twist device

x) Stückzahl nach Bedarf

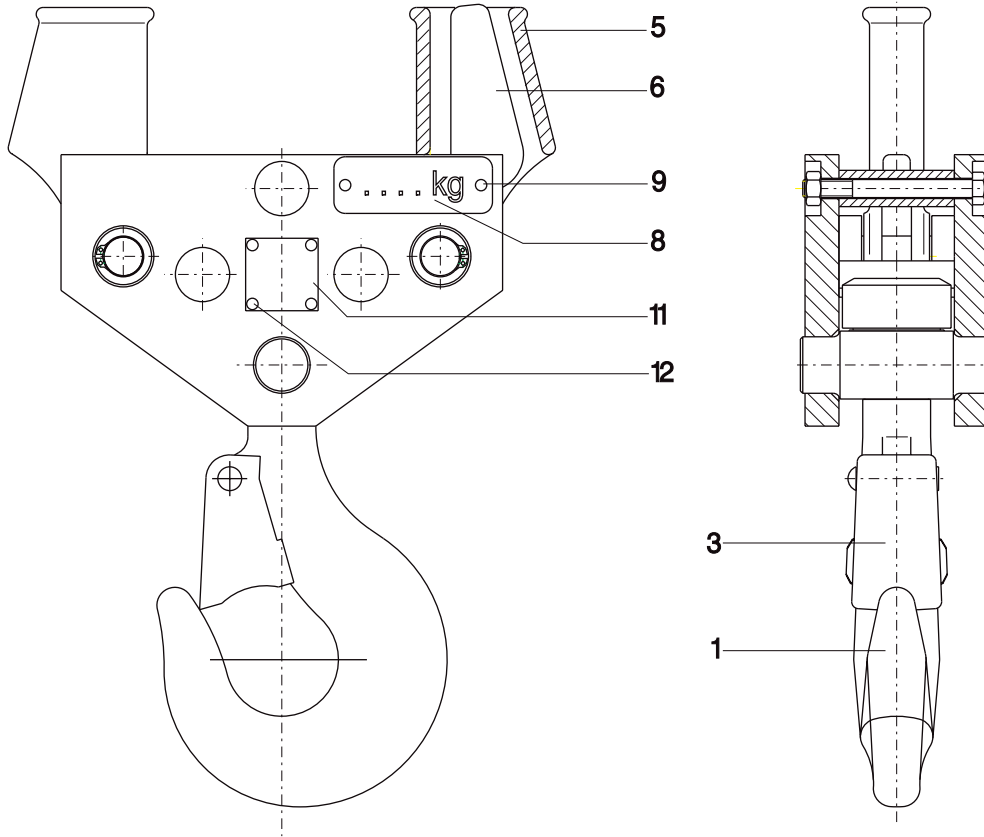
x) Quantity as required



Original parts
GD; GE



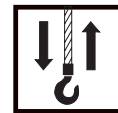
T181-2



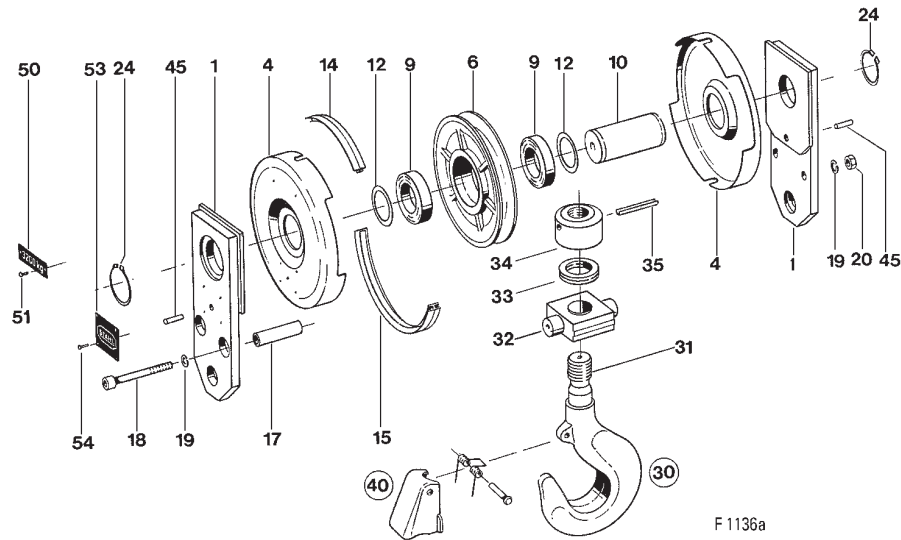
F0248

Item	Part-Number	Piece	Description	Benennung
	03 330 57 56 0	1	T 181-2 1)	Designation
1	P0005268	1	RSN 2,5 (Item 3)	Load hook
3	P0012468	1		Safety catch
5	P0009896	2		Lock for wire rope
6	P0005762	2		Rope wedge
8	indicate hoist serial no and capacity	2		capacity
9	P0011326	4	3x5	Blind rivet
11	P0001455	2		Name plate
12	507 831 0	8	3x5	Blind rivet

1)Please state capacity.



H252-2



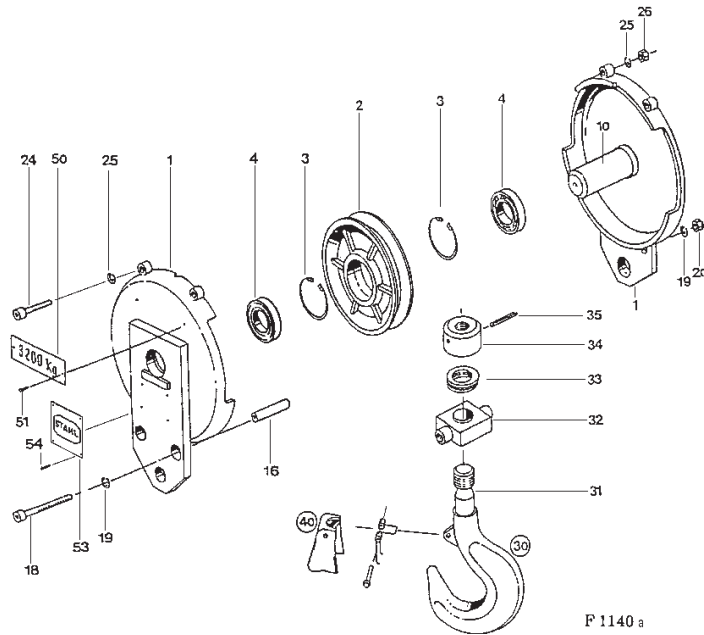
F 1136a

Item	Part-Number	Piece	Description	Designation	
	P0001358	1	H252-2	1)2) (Item 1-6,10-30,45-54)	Bottom hook block
	P0001371	1	H252-2	1)3) (Item 1-6,10-30,45-54)	
1	P0001364	2			Side cheek
4	P0001483	2			Protection hood
6	P0001354	1	d250mm	(Item 9)	Rope pulley
9	P0012723	2	6212-2Z	DIN 625	Grooved ball bearing
10	P0001487	1			Axle
12	P0011307	2	60x75x1,5	DIN 988	Adjusting washer
14	P0001478	1			Joining element
15	P0001481	1			Joining element
17	P0001479	2			Bushing
18	500 830 0	2	M12x110	DIN 912-8.8	Socket head cap screw
19	P0011216	4	12	DIN 7980	Spring washer
20	P0011154	2	M12	DIN 934-8	Hexagonal nut
24	P0011224	2	60x3	DIN 471	Locking ring
30	P0005902	1	RSN 4	(Item 31-40)	Load hook
	P0005887	1	RS 4		
31	P0005978	1	RSN 4	4)	Load hook
	25 335 02 09 0	1	RS 4	4)	
32	P0005972	1			Traverse
33	P0012725	1	51110	DIN 711	Axial bearing
34	P0005984	1		4	Nut
35	P0010907	1	10x80	DIN 1481	Clamping sleeve
40	P0012468	1			Safety catch
45	P0010892	2	6x30	DIN 1473	Pin
50	indicate hoist serial no and capacity	2			capacity
51	P0011326	4	3x5		Blind rivet
53	P0001438	2			Name plate
54	P0011326	8	3x5		Blind rivet

1) Please state capacity.
 2) With load hook RSN
 3) With ramshorn hook RS
 4) Not supplied as individual part

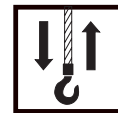


H375-2

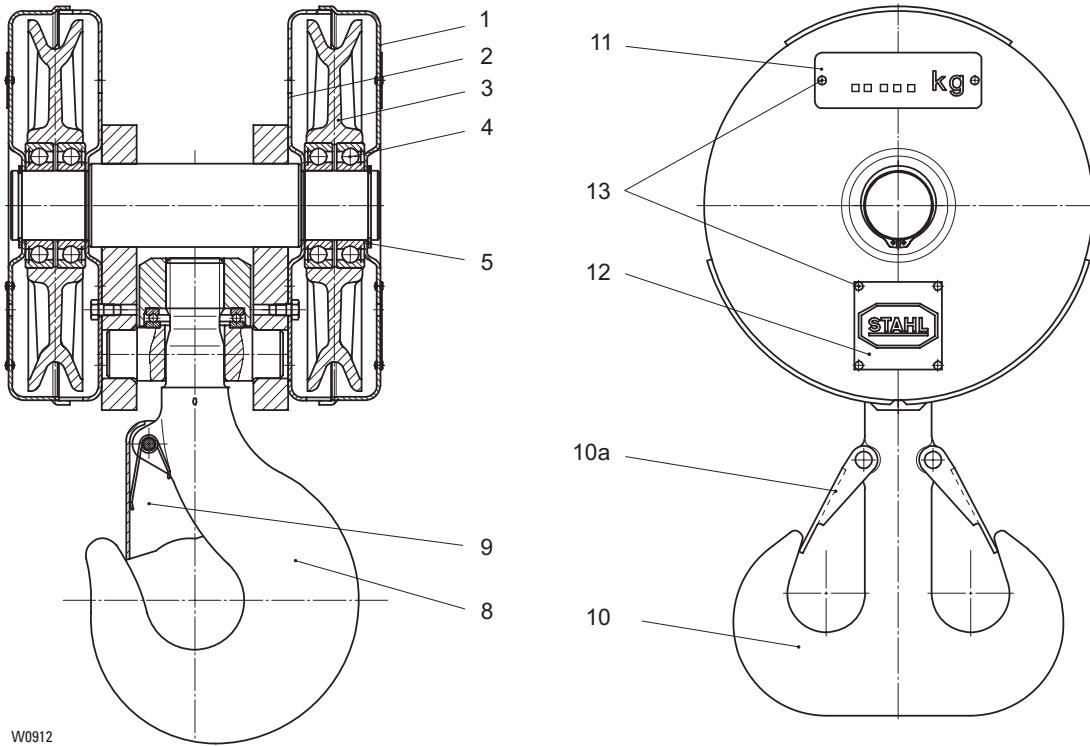


Pos	Teil-Nummer Part-Number	Stück Piece	Beschreibung Description		Designation
	P0001384	1	H375-2	1)2)	(Item 1,2,10-30,50-54) Bottom hook block
	P0001404	1	H375-2	1)3)	(Item 1,2,10-30,50-54)
1	P0001396	2			Side cheek
2	P0005859	1	d375mm	(Item 3+4)	Rope pulley
3	P0011232	2	125x4	DIN 472	Locking ring
4	P0012717	2	6214-Z	DIN 625	Grooved ball bearing
10	P0001490	1			Axle
16	P0005973	2			Distance pipe
18	03 335 01 90 0	2			Screw
19	P0011216	4	12	DIN 7980	Spring washer
20	P0011154	2	M12	DIN 934-8	Hexagonal nut
24	P0010632	2	M12x60	DIN 912-8.8	Socket head cap screw
25	P0011216	4	12	DIN 7980	Spring washer
26	P0011154	2	M12	DIN 934-8	Hexagonal nut
30	P0005904	1	RSN 5	(Item 31-40)	Load hook
	P0005888	1	RS 5		
31	P0005986	1	RSN 5	4)	Load hook
	P0005987	1	RS 5	4)	
32	25 332 00 06 0	1			Traverse
33	P0012726	1	51112	DIN 711	Axial bearing
34	P0005989	1		4)	Nut
35	P0010908	1	10x90	DIN 1481	Clamping sleeve
40	P0012468	1			Safety catch
50	indicate hoist serial no and capacity	2			Capacity
51	P0011326	4	3x5		Blind rivet
53	P0008954	2			Name plate
54	P0011326	8	3x5		Blind rivet

1) Please state capacity.
2) With load hook RSN
3) With ramshorn hook RS
4) Not supplied as individual part



H227-4
(15 US tons)



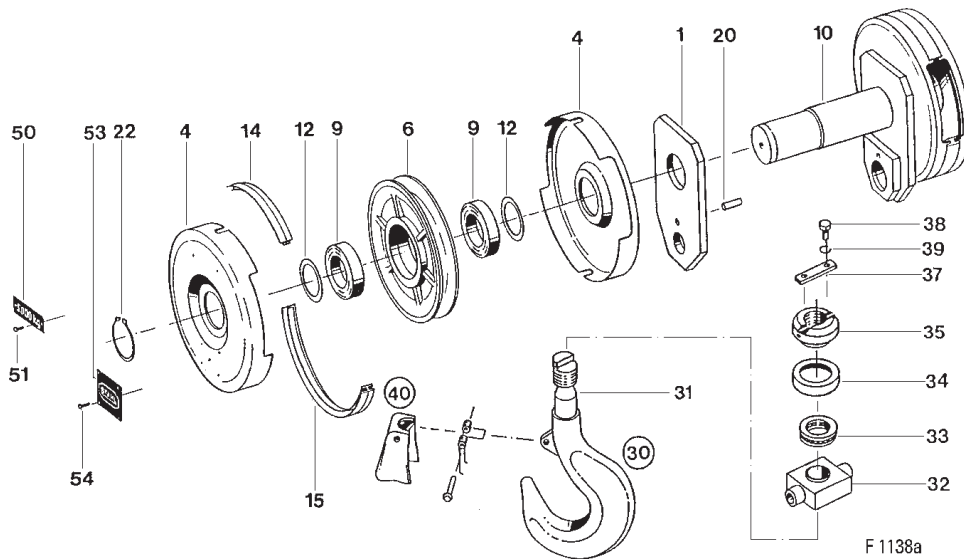
W0912

Item	Part-Number	Piece	Description	Designation	
	P0000114	1	H227-4	1)2)	Bottom hook block
	P0000115	1	H227-4	1)3)	
1	P0000140	2		Joining element	
2	P0000138	4		Protection hood	
3	P0000079	2	D225	Rope pulley	
4	P0012551	4	6210-Z	Grooved ball bearing	
5	P0011231	2	50x2	Locking ring	
6	P0000143	2		Joining element	
8	P0005904	1	RSN 5	Load hook	
9	P0012468	1		Safety catch	
10	P0005888	1	RS 5	Ramshorn hook	
10a	P0012461	1		Safety catch	
11	indicate hoist serial no and capacity	2		Capacity	
12	P0001440	2		Name plate	
13	P0011326	12	3x5	Blind rivet	

1) Please state capacity
2) With load hook RSN
3) With ramshorn hook RSN



H252-4



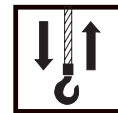
Item	Part-Number	Piece	Description	Designation
	P0001362	1	H252-4	Bottom hook block
	P0001372	1	H252-4	Bottom hook block
1	P0001488	2		Side cheek
4	P0001483	4		Protection hood
6	P0001354	2	d250mm	Rope pulley
9	P0012723	4	6212-2Z	Grooved ball bearing
10	P0001489	1		Axle
12	P0011307	4	60x75x1,5	Adjusting washer
14	P0001478	2		Joining element
15	P0001481	2		Joining element
20	P0010892	2	6x30	Pin
22	P0011224	2	60x3	Locking ring
30	P00059120	1	RSN 6	Load hook
	P0006101	1	RS 6	Load hook
31	P00059990	1	RSN 6	Load hook
	P0006000	1	RS 6	Load hook
32	P0005994	1		Traverse
33	P0012728	1	51214	Axial bearing
34	P0005979	1		Guard plate
35	P0005997	1		Nut
37	P0005980	1		Locking plate
38	P0010695	2	M10x16	Hexagon head cap screw
39	P0011102	2	A10	Spring washer
40	P0012469	1		Safety catch
50	indicate hoist serial no and capacity	2		Capacity
51	P0011326	4	3x5	Blind rivet
53	P0001445	2		Name plate
54	P0011326	8	3x5	Blind rivet

1) Please state capacity.

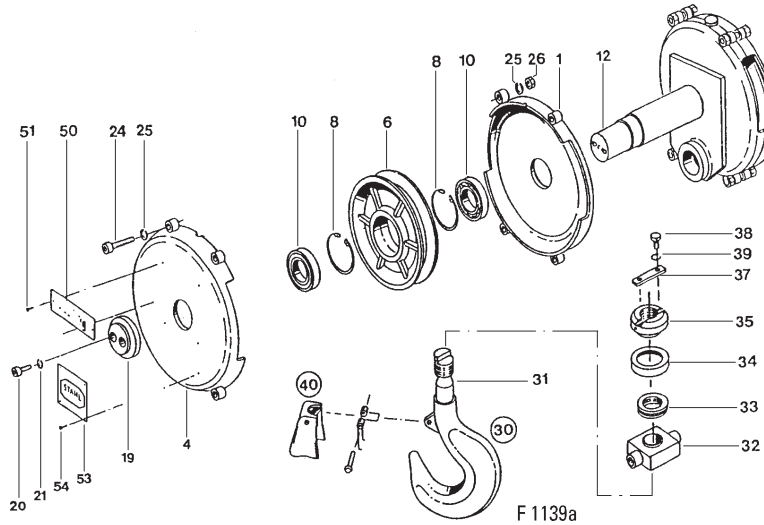
2) With load hook RSN

3) With ramshorn hook RS

4) Not supplied as individual part



H375-4

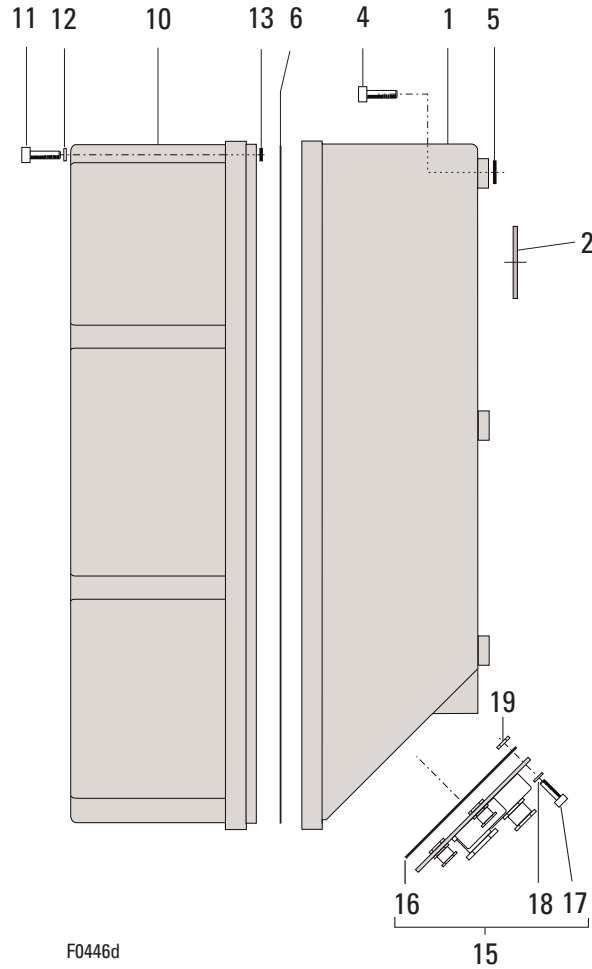


Item	Part-Number	Piece	Description	Designation
	P0001385	1	H375-4	Bottom hook block
	P0001405	1	H375-4	Bottom hook block
1	P0001391	2	(Item 8+10)	Side cheek
4	P0001386	2		Protection hood
6	P0005859	2	d375mm	Rope pulley
8	P0011232	4	125x4	Locking ring
10	P0012717	4	6214-Z	Grooved ball bearing
12	P0001491	1		Axle
19	P0005981	2		Retaining disc
20	P0010707	4	M12x20	Socket head cap screw
21	P0011216	4	12	Spring washer
24	P0010632	8	M12x60	Socket head cap screw
25	P0011216	16	12	Spring washer
26	P0011154	8	M12	Hexagonal nut
30	P0005914	1	RSN 10	Load hook
	P0005908	1	RF 10	Load hook
31	P0006001	1	4)	Load hook
	P0006002	1	4)	Load hook
32	P0005996	1		Traverse
33	P0012729	1	51218	Axial bearing
34	P0005988	1		Guard plate
35	P0005998	1	4)	Nut
37	25 335 00 18 0	1		Locking plate
38	P0010613	2	M10x20	Hexagon head cap screw
39	P0011102	2	A10	Spring washer
40	P0012470	1		Safety catch
50	indicate hoist serial no and capacity	2		Capacity
51	P0011326	4	3x5	Blind rivet
53	P0008954	2		Name plate
54	P0011326	8	3x5	Blind rivet

1) Please state capacity.
 2) With load hook RSN
 3) With ramshorn hook RF
 4) Not supplied as individual part

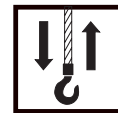


Control panel

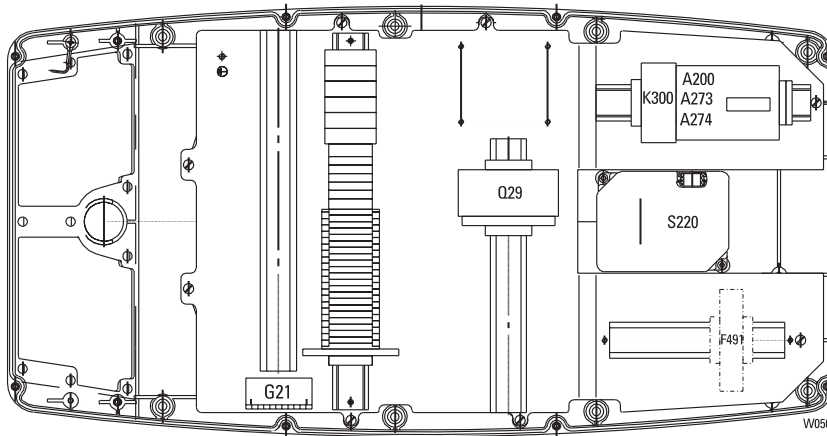
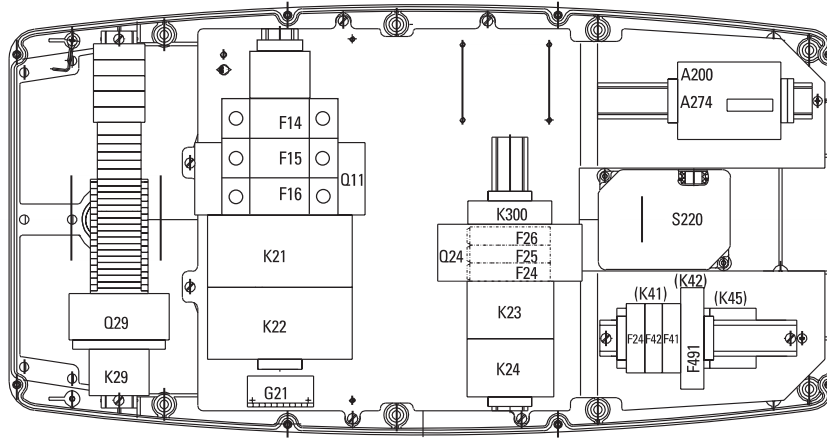


F0446d

Item	Part-Number	Piece	Description	Designation
1	P0002562	1	(Item 2)	Terminal box
2	06 439 02 95 0	1		Sealing ring
4	P0010589	8	M8x25	Socket head cap screw
5	P0012071	8	5x2,5	Round sealing ring
6	P0002648	1		Seal
10	P0002553	1		Box cover
11	P0010583	8	M5x20	Socket head cap screw
12	P0011268	8	S 5	Locking disc
13	P0011990	8	4,0x1,5	Round sealing ring
15	indicate hoist serial no	1	(Item 16-19)	Flange plate complete
16	P0002647	1		Seal
17	500 991 0	10	8x20	Socket head cap screw
18	506 180 0	10	B8,4	Disc
19	P0011292	10	M8	Locking nut



Control 208V / 230V / 460V / 575 V / 60Hz



Designation	Marking	Description	Part-Number
Gear-type limit switch	S220	GE-S 125.02	P0014072
		GE-S 125.04	P0014073
		GE-S 125.06	P0014074

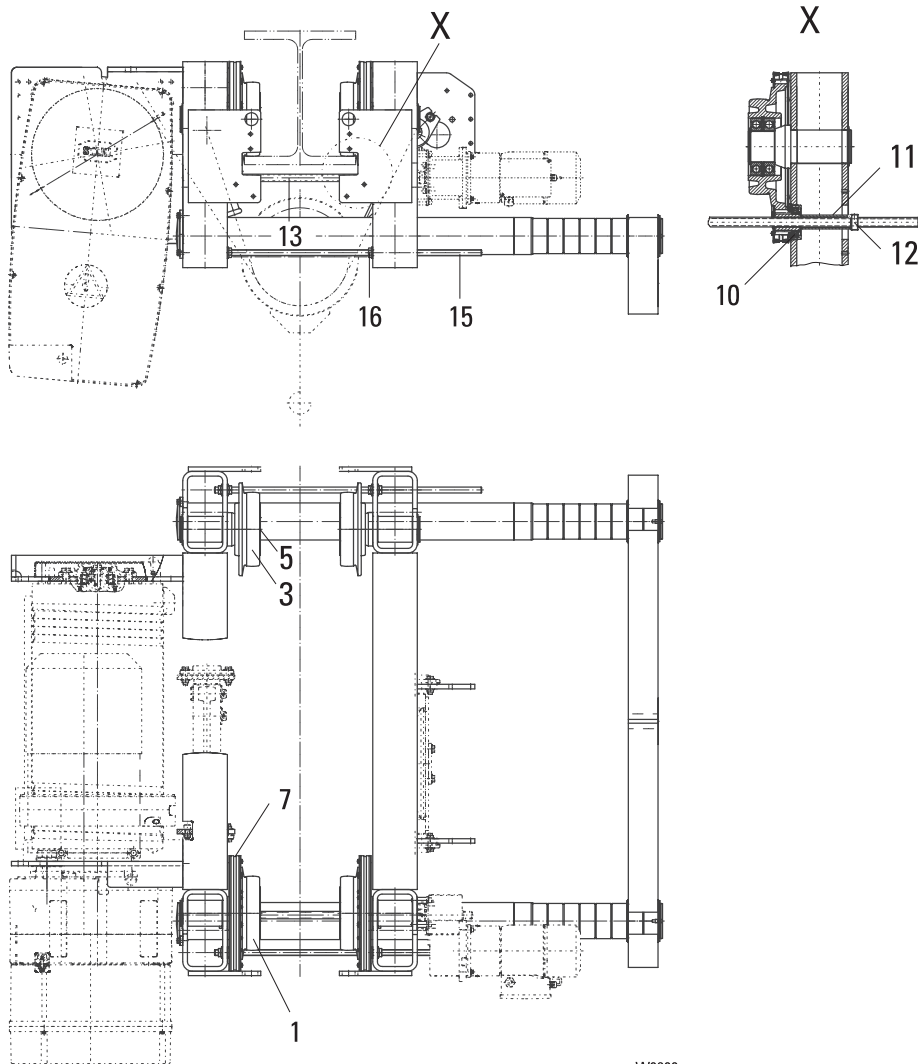
Indicate hoist serial no and marking of the electrical component



Original parts
GD; GE



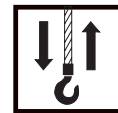
SH-S76



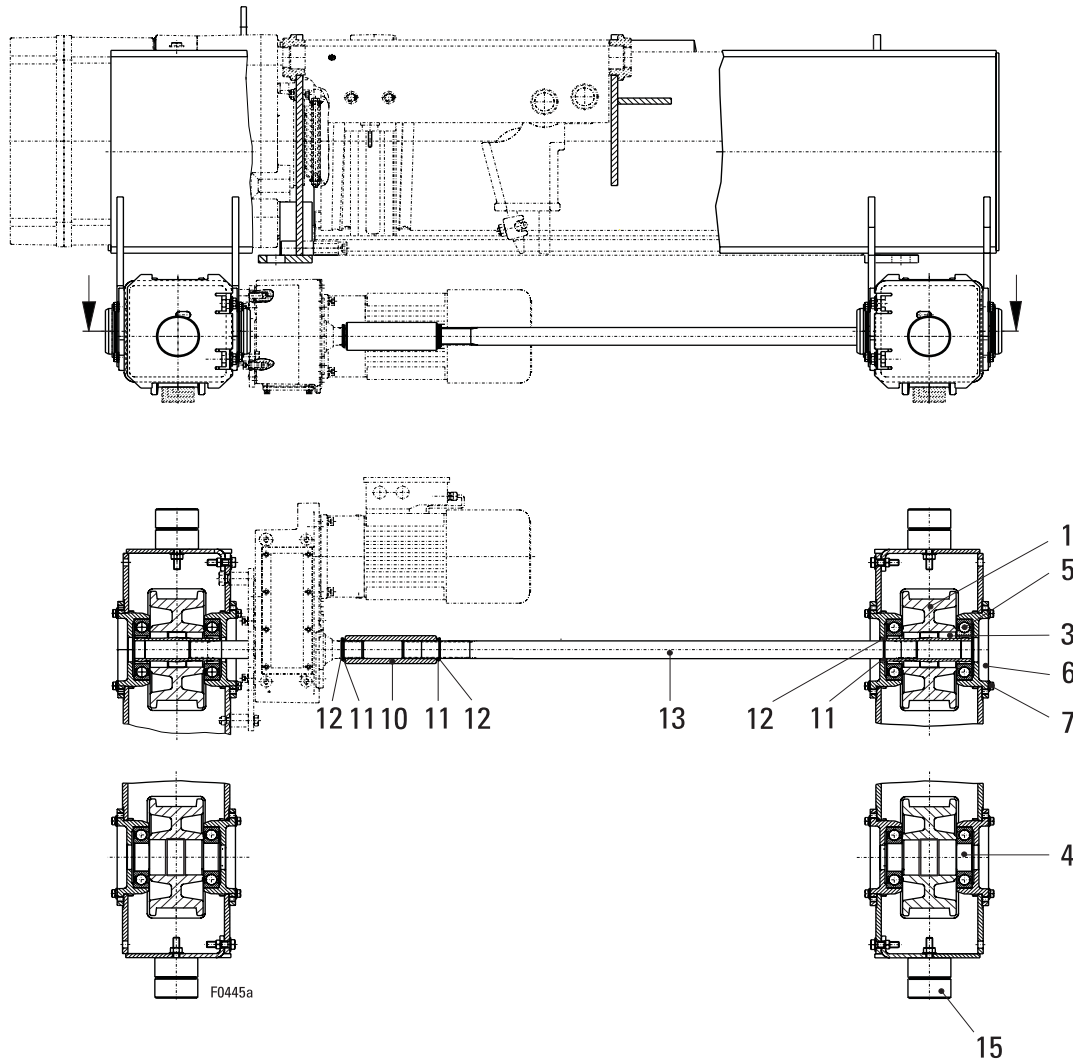
W0600

Item	Part-Number	Piece	Description	Designation
1	P0002671	2	A200	Wheel
3	P0002672	2	B200	Wheel
5	P0011222	4	65x2,5	Locking ring
7	07 250 05 42 0	2		Wheel cover
10	21 270 03 39 0	2		Flange bearing compl.
11	P0004950	1		Distance pipe
12	P0010911	1		Adjusting ring
13	P0004968	1	1) DIN 705 221 mm - 500 mm	Drive shaft
	21 273 16 60 0	1	1) 124 mm - 220 mm	Drive shaft
15	P0000361	1	M16x720	Threaded bolt
16	P0011331	8	M16	Locking nut

1) Flange width



TR-S06



Item	Part-Number	Piece	Description	Designation	
1	P0005618	4	d160	1) 40 mm	Wheel
	P0005620	4	d160	1) 50 mm	
3	P0005628	2		Travelling wheel shaft	
4	P0005622	2		Axle	
5	P0012558	8	6211-2Z	DIN 625	Grooved ball bearing
6	P0006178	8			Bearing cover
7	P00107490	24	M10x20-10		Locking screw
10	P0005255	1			Coupling sleeve
11	P0011175	3	S30x42x2,5	DIN 988	Supporting ring
12	P0011071	3	30x2	DIN 471	Locking ring
13	P0005259	1		2) 1250 mm	Drive shaft
	P0005260	1		2) 1400 mm	
	22 275 09 14 0	1		2) 1800 mm	
	P0005261	1		2) 2240 mm	
	22 275 07 14 0	1		2) 2800 mm	
	22 275 08 14 0	1		2) 3150 mm	
15	P0006030	4			Buffer

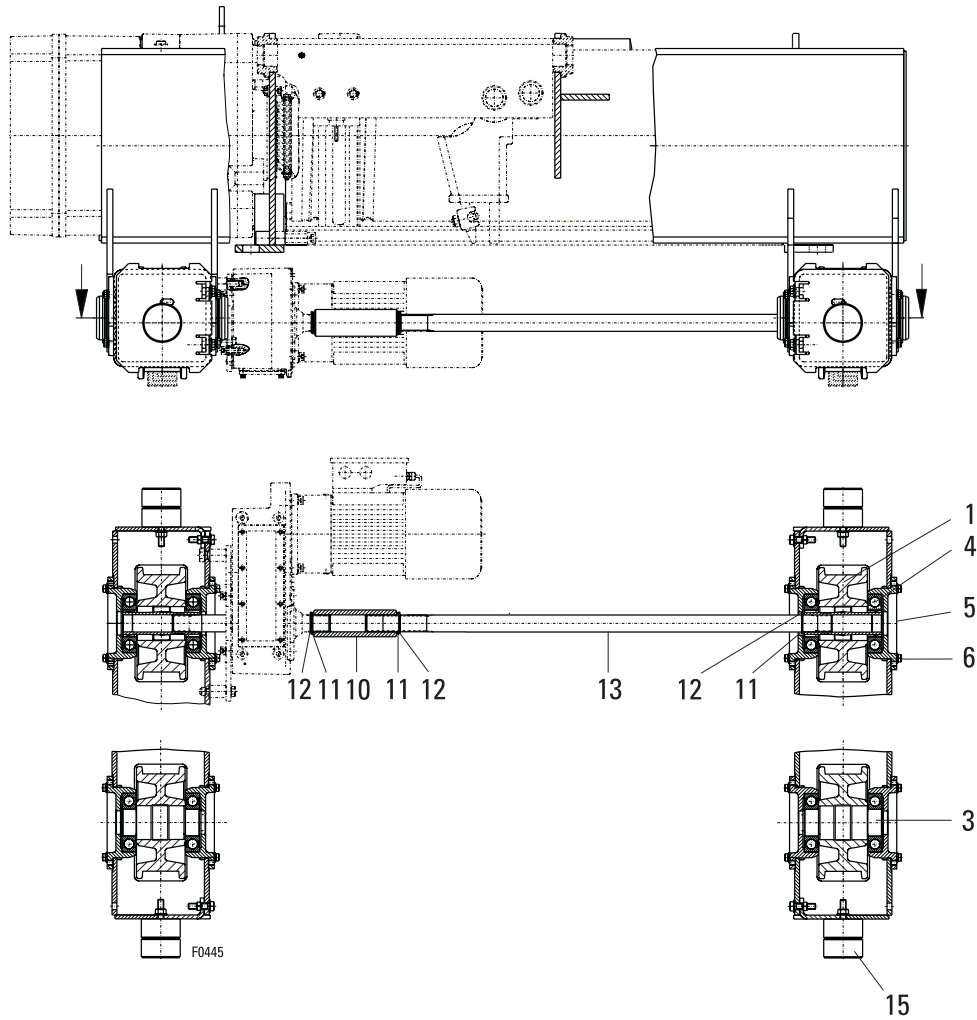
1) Rail width
2) Track gauge



Original parts
GD; GE

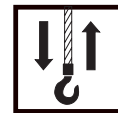


TR-S07

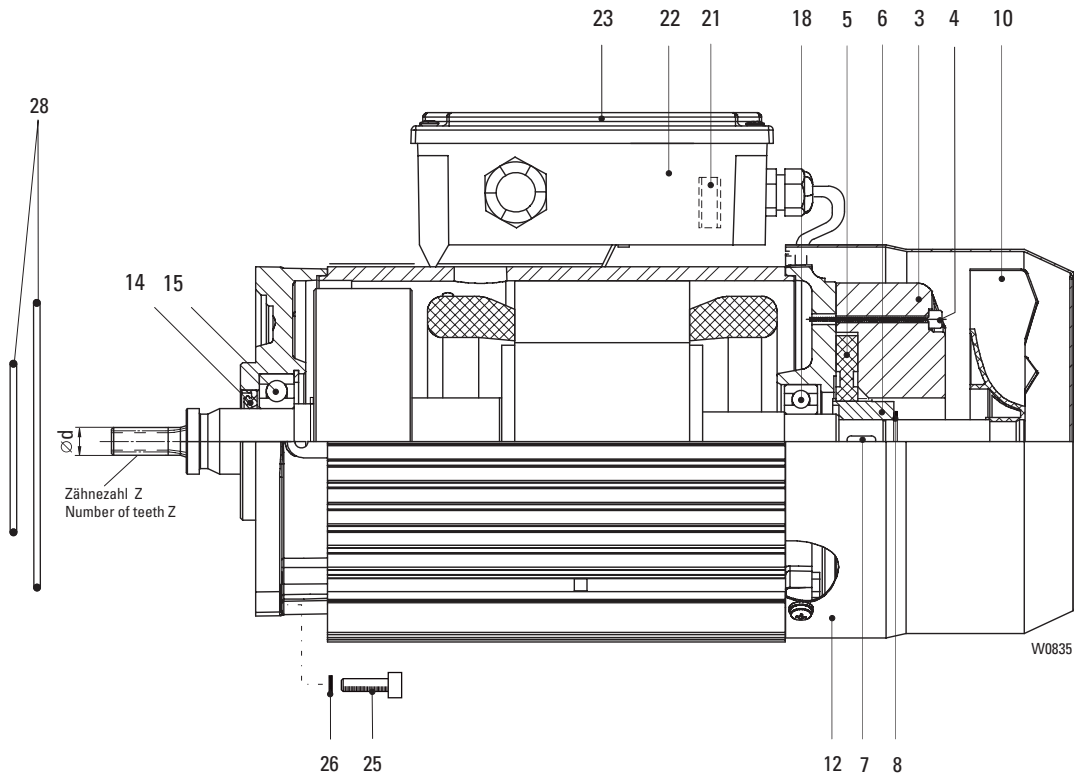


Item	Part-Number	Piece	Description	Designation	
1	P0002686	2	d200	1) k=40 mm	Wheel
	P0002688	2	d200	1) k=50 mm	
	P0002690	2	d200	1) k=60 mm	
3	P00026850	2	d200	1) k=40 mm	Wheel
	P0002687	2	d200	1) k=50 mm	
	P0002689	2	d200	1) k=60 mm	
4	P0012555	8	6311-2Z	DIN 625	Grooved ball bearing
5	P0006274	8			Bearing flange
6	P0010756	32	M10x30		Safety bolt
10	P0005496	1			Coupling sleeve
11	P0011207	3	S35x45x2,5	DIN 988	Supporting ring
12	P0011073	3	35x2,5	DIN 471	Retainer ring
13	P0005495	1		2) 1400 mm	Drive shaft
	23 273 01 14 0	1		2) 1800 mm	
	P0005500	1		2) 2240 mm	
	23 273 03 14 0	1		2) 2800 mm	
	P0005503	1		2) 3150 mm	
15	P0006030	4			Buffer

1) Rail width
2) Track gauge



Motor 8/2F12
SF ... 123



Item	Part-Number	Piece	Description		Z	d[mm]	Designation
	P0004932	1	SF 17 113 123	1) (Item 1-23)	6	9,60	Motor complete
		1	SF 14 113 123	1) (Item 1-23)			
	P0004926	1	SF 17 111 123	1) (Item 1-23)	7	10,75	
		1	SF 17 219 123	1) (Item 1-23)			
		1	SF 15 226 123	1) (Item 1-23)			
		1	SF 14 111 123	1) (Item 1-23)			
		1	SF 25 230 123	1) (Item 1-23)			
		1	SF 11 226 123	1) (Item 1-23)			
	P0004921	1	SF 17 109 123	1) (Item 1-23)	9	12,85	
		1	SF 17 217 123	1) (Item 1-23)			
		1	SF 15 224 123	1) (Item 1-23)			
		1	SF 14 109 123	1) (Item 1-23)			
		1	SF 25 226 123	1) (Item 1-23)			
		1	SF 25 228 123	1) (Item 1-23)			
		1	SF 11 217 123	1) (Item 1-23)			
		1	SF 11 224 123	1) (Item 1-23)			
		1	SA-C 57 38 123	1) (Item 1-23)			
		1	SA-C 57 42 123	1) (Item 1-23)			
		1	SA-C 57 40 123	1) (Item 1-23)			
		1	SA-C 67 42 123	1) (Item 1-23)			
		1	SA-C 67 44 123	1) (Item 1-23)			
		1	SA-C 67 46 123	1) (Item 1-23)			
	P0004917	1	SF 17 107 123	1) (Item 1-23)	11	14,95	
		1	SF 17 215 123	1) (Item 1-23)			
		1	SF 15 222 123	1) (Item 1-23)			
		1	SF 14 107 123	1) (Item 1-23)			
		1	SF 11 215 123	1) (Item 1-23)			
		1	SF 11 222 123	1) (Item 1-23)			



Original parts
GD; GE



Item	Part-Number	Piece	Description				Designation		
	P00049139	1	SF 17 213 123	1)	(Item 1-23)	Z	d[mm]	Motor complete	
		1	SF 15 220 123	1)	(Item 1-23)	9	19,20		
		1	SF 25 222 123	1)	(Item 1-23)				
		1	SF 25 224 123	1)	(Item 1-23)				
		1	SF 11 213 123	1)	(Item 1-23)				
		1	SF 11 220 123	1)	(Item 1-23)				
	P0004909	1	SF 17 211 123	1)	(Item 1-23)	11	22,30		
		1	SF 15 218 123	1)	(Item 1-23)				
		1	SA-C 57 36 123	1)	(Item 1-23)				
		1	SA-C 67 40 123	1)	(Item 1-23)				
	P0004871	1	SF 17 209 123	1)	(Item 1-17)	9	27,85		
	P0004866	1	SF 17 207 123	1)	(Item 1-17)	11	32,35		
3	P0013071	1	104 - 120V	2)	190 - 460V 50Hz	3)			Brake
	P0013072	1	130 - 150V	2)	480 - 525V 50Hz	3)			
	P0013073	1	156 - 180V	2)	575 - 720V 50Hz	3)			
4	502 942 0	3	M4x45		ISO 4762			Socket head cap screw	
5	P0013069	1	Gr.08					Brake rotor	
6	P0013256	1						Hub	
7	537 011 0	1	5x5x16		DIN 6885			Feather key	
8	P0011053	1	15x1		DIN 471			Circlip	
10	P0013360	1						Fan wheel	
12	P0013251	1						Fan cowling	
14	P0012754	1	20x35x7	4)				Shaft seal	
15	P0012580	1	6204-2RS		DIN 625			Grooved ball bearing	
18	P0012542	1	6202-2RS		DIN 625			Grooved ball bearing	
21	P0013076	1	PME400	5)				Rectifier	
	P0013152	1	PMB400	6)					
22	P0013277	1						Terminal box	
23	P0013254	1						Terminal box lid	
25	P0010586	4	M6x20		ISO 4762-8.8			Socket head cap screw	
26	P0011189	4	S6					Lock washer	
28	P0011993	1	130x2		SF 1.			Round sealing ring	
	P0012083	1	70x2		SF 25; SA-C .7				

1) Please state operating voltage, frequency, type of geared motor and type of motor.

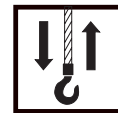
2) Coil voltage

3) Operating voltage motor

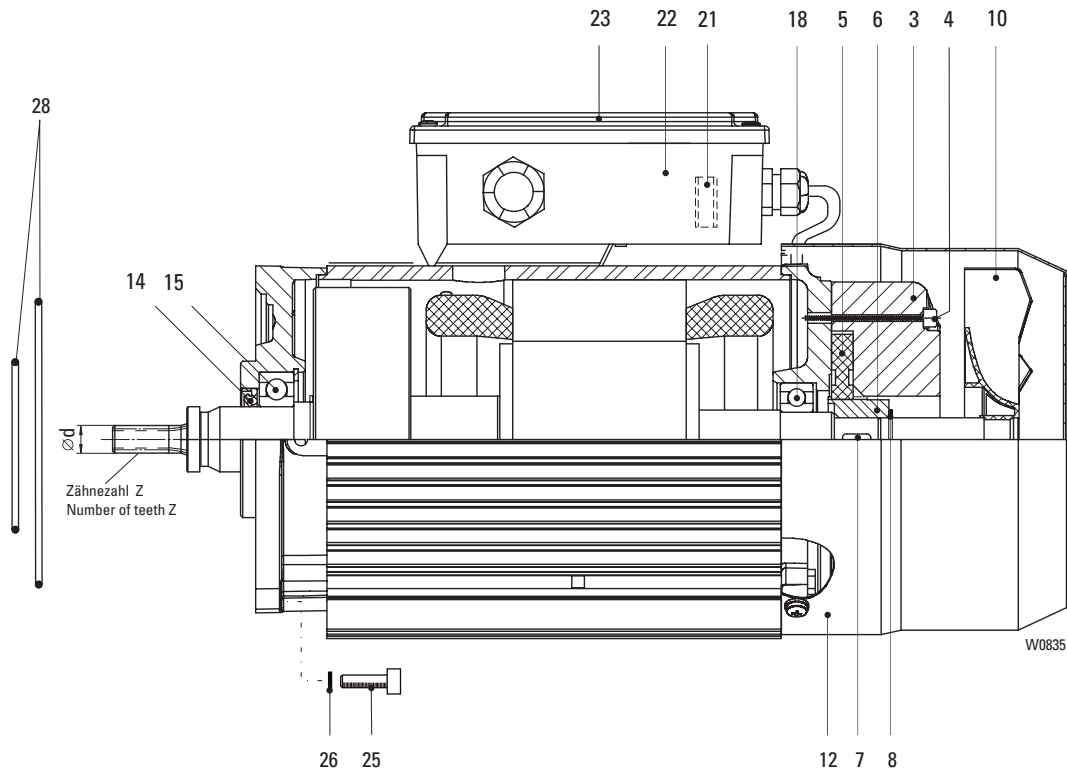
4) Only replaceable at Z 6 - 11, d <20mm

5) Not for supply voltage 190...210V/60Hz

6) Only for supply voltage 190...210V/60Hz



Motor 8/2F13
SF ... 133



Item	Part-Number	Piece	Description		Z	d[mm]	Designation
	P0004904	1	SF 17 111 133	1) (Item 1-23)	7	10,75	Motor complete
		1		1) (Item 1-23)			
	P0004900	1	SF 11 217 133	1) (Item 1-23)	9	12,85	
		1	SF 17 109 133	1) (Item 1-23)			
		1	SF 17 217 133	1) (Item 1-23)			
		1	SF 25 226 133	1) (Item 1-23)			
		1	SF 25 228 133	1) (Item 1-23)			
		1	SA-C 57 38 133	1) (Item 1-23)			
		1	SA-C 57 40 133	1) (Item 1-23)			
		1	SA-C 67 42 133	1) (Item 1-23)			
		1	SA-C 67 44 133	1) (Item 1-23)			
		1	SA-C 67 46 133	1) (Item 1-23)			
	P0004896	1	SF 11 215 133	1) (Item 1-23)	11	14,95	
		1	SF 17 107 133	1) (Item 1-23)			
		1	SF 17 215 133	1) (Item 1-23)			
		1	SF 15 222 133	1) (Item 1-23)			
	P0004892	1	SF 11 213 133	1) (Item 1-23)	9	19,20	
		1	SF 11 220 133	1) (Item 1-23)			
		1	SF 17 213 133	1) (Item 1-23)			
		1	SF 15 220 133	1) (Item 1-23)			
		1	SF 25 222 133	1) (Item 1-23)			
		1	SF 25 224 133	1) (Item 1-23)			
	P0004887	1	SF 11 211 133	1) (Item 1-23)	11	22,30	
		1	SF 17 211 133	1) (Item 1-23)			
		1	SF 15 218 133	1) (Item 1-23)			
		1	SA-C 57 32 133	1) (Item 1-23)			
		1	SA-C 57 34 133	1) (Item 1-23)			
		1	SA-C 57 36 133	1) (Item 1-23)			
		1	SA-C 67 36 133	1) (Item 1-23)			
		1	SA-C 67 38 133	1) (Item 1-23)			
		1	SA-C 67 40 133	1) (Item 1-23)			

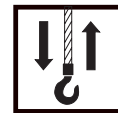


Original parts
GD; GE

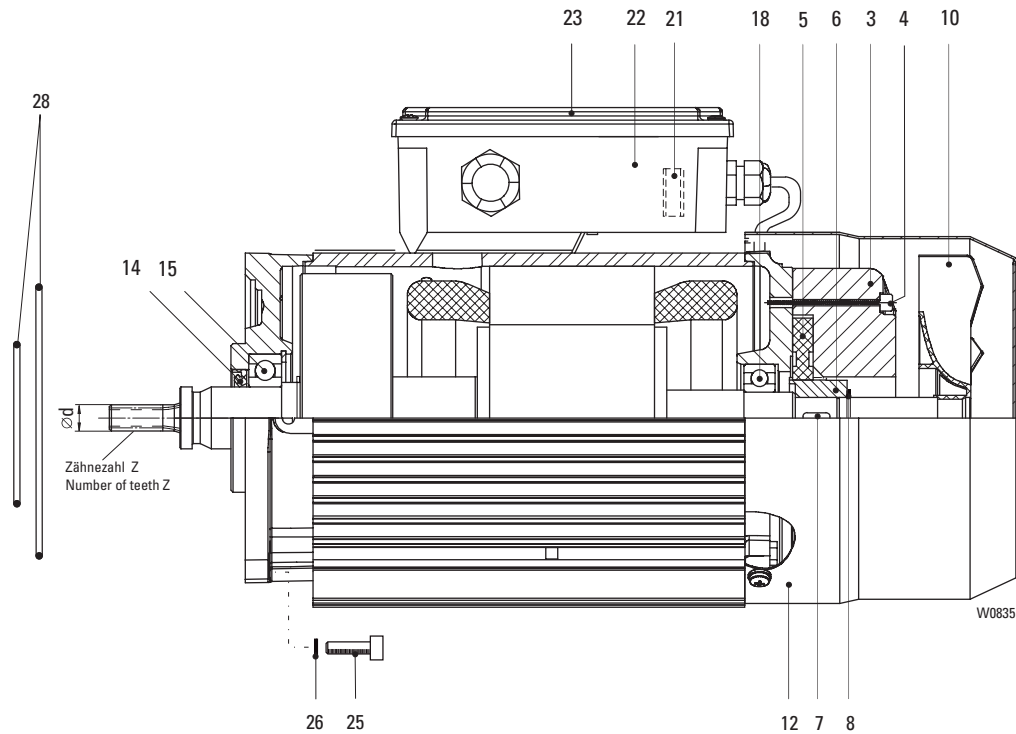


Item	Part-Number	Piece	Description				Designation	
	P0004882	1	SF 17 209 133	1)	(Pos.1-23)	Z	d[mm]	Motor complete
		1	SF 15 216 133	1)	(Pos.1-23)	9	27,85	
		1	SF 25 218 133	1)	(Pos.1-23)			
		1	SF 25 220 133	1)	(Pos.1-23)			
	P0004876	1	SF 17 207 133	1)	(Pos.1-23)	11	32,35	
		1	SF 15 214 133	1)	(Pos.1-23)			
	P0004856	1	SF 35 832 133	1)	(Pos.1-23)	13	36,90	
		1	SF 35 834 133	1)	(Pos.1-23)			
		1	SF 35 836 133	1)	(Pos.1-23)(Pos			
		1	SF 25 830 133	1)	(Pos.1-23)			
		1	SF 25 832 133	1)	(Pos.1-23)			
		1	SF 25 834 133	1)	(Pos.1-23)			
3	P0013103	1	104 - 120V	2)	190 - 460V	50Hz	3)	Brake
	P0013150	1	130 - 150V	2)	480 - 525V	50Hz	3)	
	P0013151	1	156 - 180V	2)	575 - 720V	50Hz	3)	
4	502 942 0	3	M4x45		ISO 4762			Socket head cap screw
5	P0013069	1	Gr.08					Brake rotor
6	P0013256	1						Hub
7	537 011 0	1	5x5x16		DIN 6885			Feather key
8	P0011053	1	15x1		DIN 471			Circlip
10	P0013360	1						Fan wheel
12	P0013251	1						Fan cowling
14	P0012754	1	20x35x7	4)				Shaft seal
15	P0012580	1	6204-2RS		DIN 625			Grooved ball bearing
18	P0012542	1	6202-2RS		DIN 625			Grooved ball bearing
21	P0013076	1	PME400	5)				Rectifier
	P0013152	1	PMB400	6)				
22	P0013277	1						Terminal box
23	P0013254	1						Terminal box cover
25	P0010586	4	M6x20		ISO 4762-8.8			Socket head cap screw
26	P0011189	4	S6					Lock wascher
28	P0011993	1	130x2		SF1.			Round sealing ring
	P0012083	1	70x2		SF25; SF35; SA-C.7			

- 1) Please state operating voltage, frequency, type of geared motor and type of motor.
- 2) Coil voltage
- 3) Operating voltage motor
- 4) Only replaceable at Z 7 - 11, d <20mm
- 5) Not for supply voltage 190...210V/60Hz
- 6) Only for supply voltage 190...210V/60Hz



8/2F31
SF ... 313



Item	Part-Number	Piece	Description	Z	d[mm]	Designation	
	P0005467	1	SF 11 217 313	1) (Item 1-23)	9	12,85	Motor complete
		1	SF 25 226 313	1) (Item 1-23)			
		1	SF 25 228 313	1) (Item 1-23)			
		1	SA-C 57 38 313	1) (Item 1-23)			
		1	SA-C 67 42 313	1) (Item 1-23)			
		1	SA-C 67 44 313	1) (Item 1-23)			
	P0005465	1	SF 11 213 313	1) (Item 1-23)	9	19,20	
		1	SF 17 213 313	1) (Item 1-23)			
		1	SF 25 222 313	1) (Item 1-23)			
		1	SF 25 224 313	1) (Item 1-23)			
		1	SF 35 226 313	1) (Item 1-23)			
		1	SF 35 228 313	1) (Item 1-23)			
	P0005471	1	SF 25 218 313	1) (Item 1-23)	9	27,85	
		1	SF 25 220 313	1) (Item 1-23)			
	P0005463	1	SF 25 216 313	1) (Item 1-23)	13	36,90	
		1	SF 35 834 313	1) (Item 1-23)			
		1	SF 35 832 313	1) (Item 1-23)			
	P0005458	1	SF 11 215 313	1) (Item 1-23)	11	14,95	
		1	SF 35 230 313	1) (Item 1-23)			
	P0005473	1	SA-C 57 36 313	1) (Item 1-23)	11	22,30	
		1	SA-C 57 34 313	1) (Item 1-23)			
		1	SA-C 57 32 313	1) (Item 1-23)			
		1	SA-C 57 30 313	1) (Item 1-23)			
		1	SA-C 57 28 313	1) (Item 1-23)			
		1	SA-C 57 26 313	1) (Item 1-23)			
		1	SA-C 67 40 313	1) (Item 1-23)			
		1	SA-C 67 38 313	1) (Item 1-23)			
		1	SA-C 67 36 313	1) (Item 1-23)			
		1	SA-C 67 34 313	1) (Item 1-23)			
		1	SA-C 67 32 313	1) (Item 1-23)			
		1	SA-C 67 30 313	1) (Item 1-23)			



Original parts
GD; GE



Item	Part-Number	Piece	Description			Designation
3	P0013096	1	104 - 120V	2)	190 - 460V 50Hz	Brake
	P0013097	1	130 - 150V	2)	480 - 525V 50Hz	
	P0013098	1	156 - 180V	2)	575 - 720V 50Hz	
4	P0010628	3	M6x55		ISO 4762	Socket head cap screw
5	P0013265	1				Brake rotor
6	P0013267	1				Hub
7	537 008 0	1	6x6x16		DIN 6885	Feather key
8	P0011055	1	20x1,2		DIN 471	Circlip
10	P0013361	1				Fan wheel
12	P0013252	1				Fan cowling
14	P0012764	1	30x47x7	4)		Shaft seal
15	560 087 0	1	6206-2Z C3		DIN 625	Grooved ball bearing
18	560 088 0	1	6205-2Z C3		DIN 625	Grooved ball bearing
21	P0013076	1	PME400	5)		Rectifier
	P0013152	1	PMB400	6)		
22	P0013278	1				Terminal box
23	P0013255	1				Terminal box cover
25	P0010561	4	M10x25	SF.; SA-C	ISO 4762-8.8	Socket head cap screw
	P0010591	4	M10x30	SF 25	DIN 912-8.8	
26	P0011191	4	S10			Lock wascher
28	P0011993	1	130x2		SF1.	Round sealing ring
	P0012083	1	70x2		SF25; SF35; SA-C.7	

1) Please state operating voltage, frequency, type of geared motor and type of motor.

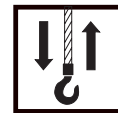
2) Coil voltage

3) Operating voltage motor

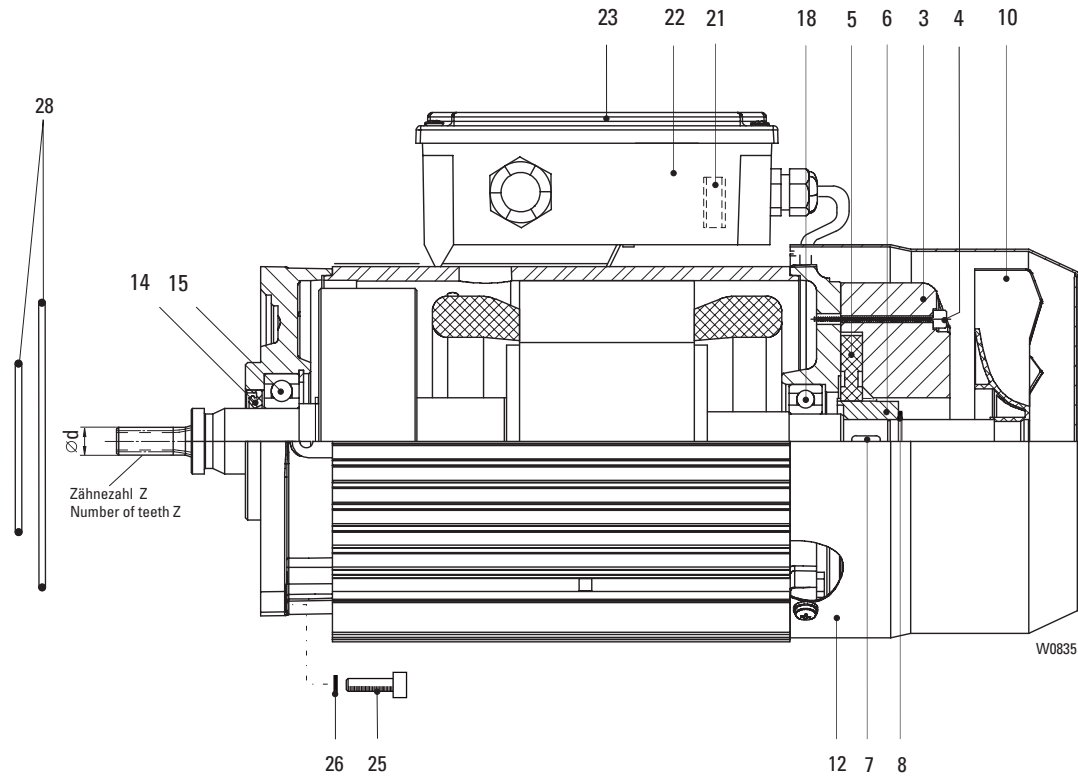
4) Only replaceable at Z 9 - 11, d <30mm

5) Not for supply voltage 190...210V/60Hz

6) Only for supply voltage 190...210V/60Hz



8/2F42
SF ... 423



Item	Part-Number	Piece	Description	Designation
	P0005703	1	SF 25 216 423	Motor complete
	P0005705	1	SF 25 218 423	
		1	SF 25 220 423	
		1	SF 35 224 423	
		1	SF 35 222 423	
	P0005702	1	SF 35 230 423	
	P0005701	1	SF 25 224 423	
		1	SF 25 222 423	
		1	SF 35 228 423	
		1	SF 35 226 423	
	P0005691	1	SA-C 57 32 423	
		1	SA-C 57 30 423	
		1	SA-C 57 28 423	
		1	SA-C 57 26 423	
		1	SA-C 67 38 423	
		1	SA-C 67 36 423	
		1	SA-C 67 34 423	
		1	SA-C 67 32 423	
		1	SA-C 67 30 423	



Item	Part-Number	Piece	Description				Designation
3	P0013099	1	104 - 120V	2)	190 - 460V	50Hz	Brake
	P0013100	1	130 - 150V	2)	480 - 525V	50Hz	
	P0013101	1	156 - 180V	2)	575 - 720V	50Hz	
4	P0010628	3	M6x55		ISO 4762		Socket head cap screw
5	P0013265	1					Brake rotor
6	P0013267	1					Hub
7	537 008 0	1	6x6x16		DIN 6885		Feather key
8	P0011055	1	20x1,2		DIN 471		Circlip
10	P0013361	1					Fan wheel
12	P0013252	1					Fan cowling
14	P0012764	1	30x47x7	4)			Shaft seal
15	560 087 0	1	6206-2Z C3		DIN 625		Grooved ball bearing
18	560 088 0	1	6205-2Z C3		DIN 625		Grooved ball bearing
21	P0013076	1	PME400	5)			Rectifier
	P0013152	1	PMB400	6)			
22	P0013278	1					Terminal box
23	P0013255	1					Terminal box cover
25	P0010561	4	M10x25	SF35; SA-C	ISO 4762-8.8		Socket head cap screw
	P0010591	4	M10x30	SF 25	DIN 912-8.8		
26	P0011191	4	S10				Lock wascher
28	P0012083	1	70x2		SF25; SF35; SA-C.7		Round sealing ring

1) Please state operating voltage, frequency, type of geared motor and type of motor.

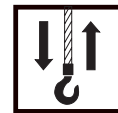
2) Coil voltage

3) Operating voltage motor

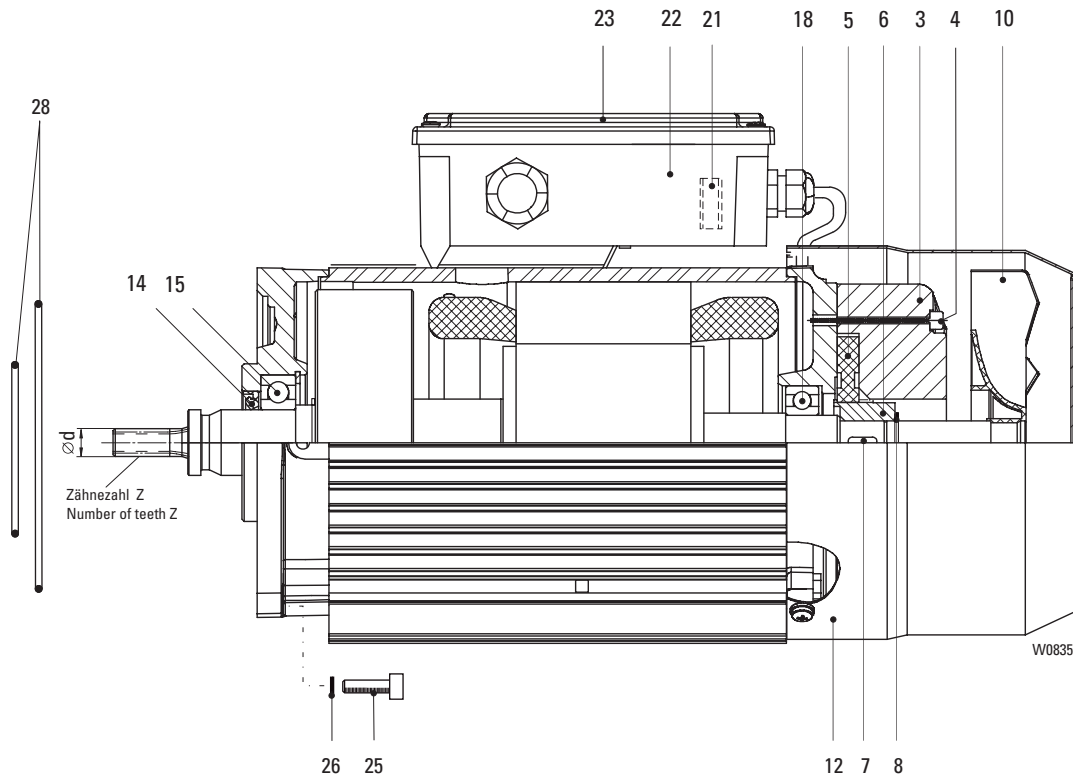
4) Only replaceable at Z 9 - 11, d <30mm

5) Not for supply voltage 190...210V/60Hz

6) Only for supply voltage 190...210V/60Hz



Motor 4F18
SF ... 184

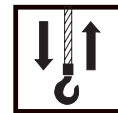


Item	Part-Number	Piece	Description	Z	d[mm]	Designation	
	P0004810	1	SF 17 207 184	1) (Item 1-23)	11	32,35	Motor complete
		1	SF 15 214 184	1) (Item 1-23)			
	P0004815	1	SF 17 209 184	1) (Item 1-23)	9	27,85	
		1	SF 15 216 184	1) (Item 1-23)			
		1	SF 25 200 184	1) (Item 1-23)			
		1	SF 25 218 184	1) (Item 1-23)			
	P0004820	1	SF 11 211 184	1) (Item 1-23)	11	22,30	
		1	SF 17 211 184	1) (Item 1-23)			
		1	SF 15 218 184	1) (Item 1-23)			
		1	SA-C 57 32 184	1) (Item 1-23)			
		1	SA-C 57 34 184	1) (Item 1-23)			
	P0004826	1	SF 17 213 184	1) (Item 1-23)	9	19,20	
		1	SF 15 220 184	1) (Item 1-23)			
		1	SF 25 224 184	1) (Item 1-23)			
		1	SF 25 222 184	1) (Item 1-23)			
	P0004831	1	SF 11 215 184	1) (Item 1-23)	11	14,95	
		1	SF 17 215 184	1) (Item 1-23)			
		1	SF 17 107 184	1) (Item 1-23)			
		1	SF 15 222 184	1) (Item 1-23)			
	P0004836	1	SF 11 224 184	1) (Item 1-23)	9	12,85	
		1	SF 17 217 184	1) (Item 1-23)			
		1	SF 17 109 184	1) (Item 1-23)			
		1	SF 15 224 184	1) (Item 1-23)			
		1	SF 25 228 184	1) (Item 1-23)			
		1	SF 25 226 184	1) (Item 1-23)			
		1	SA-C 57 40 184	1) (Item 1-23)			
		1	SA-C 57 42 184	1) (Item 1-23)			
		1	SA-C 67 40 184	1) (Item 1-23)			
		1	SA-C 67 42 184	1) (Item 1-23)			

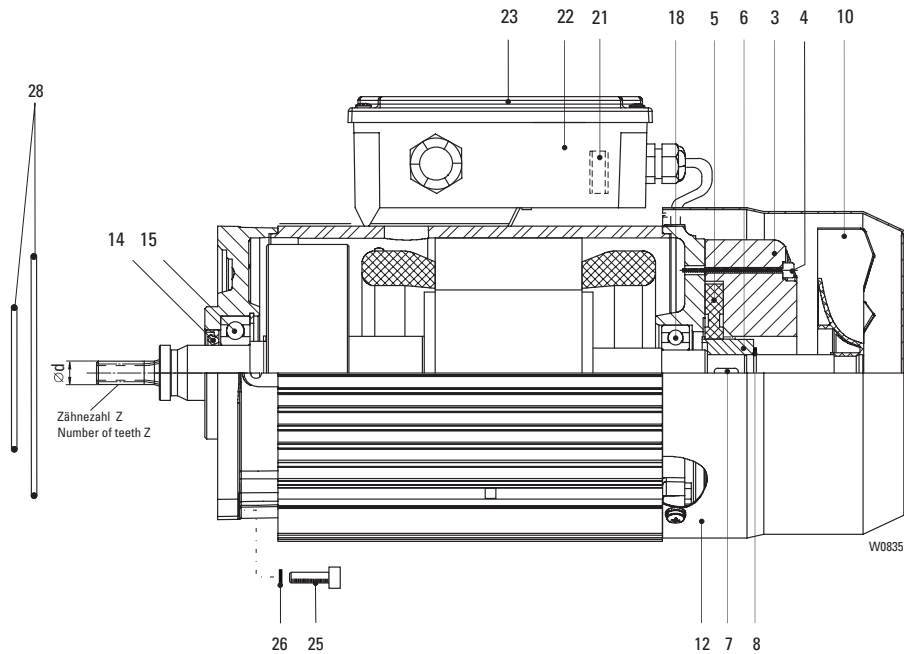


Item	Part-Number	Piece	Description				Designation	
	P0004841	1	SF 17 219 184	1)	(Item 1-23)	Z	d	Motor complete
		1	SF 17 111 184	1)	(Item 1-23)	7	9,60	
		1	SF 15 226 184	1)	(Item 1-23)			
		1	SF 25 230 184	1)	(Item 1-23)			
	P0004847	1	SF 17 113 184	1)	(Item 1-23)	6	9,60	
	P0004805	1	SF 25 834 184	1)	(Item 1-23)	13	36,90	
		1	SF 25 832 184	1)	(Item 1-23)			
		1	SF 35 836 184	1)	(Item 1-23)			
		1	SF 35 834 184	1)	(Item 1-23)			
		1	SF 35 832 184	1)	(Item 1-23)			
3	P0013103	1	104 - 120V	2)	190 - 240V	50Hz	3)	Brake
	P0013102	1	180 - 207V	2)	380 - 460V	50Hz	3)	
4	502 942 0	3	M4x45		ISO 4762			Socket head cap screw
5	P0013069	1	Gr.08					Brake rotor
6	P0013256	1						Hub
7	537 011 0	1	5x5x16		DIN 6885			Feather key
8	P0011053	1	15x1		DIN 471			Circlip
10	P0013360	1						Fan wheel
12	P0013251	1						Fan cowling
14	P0012754	1	20x35x7	4)				Shaft seal
15	P0012580	1	6204-2RS		DIN 625			Grooved ball bearing
18	P0012542	1	6202-2RS		DIN 625			Grooved ball bearing
21	P0013076	1	PME400	5)				Rectifier
	P0013269	1	PME500	6)				
22	P0013278	1						Terminal box
23	P0013254	1						Terminal box cover
25	P0010586	4	M6x20		ISO 4762-8.8			Socket head cap screw
26	P0011189	4	S6					Lock wascher
28	P0011993	1	130x2		SF1.			Round sealing ring
	P0012083	1	70x2		SF25; SF35; SA-C			

- 1) Please state operating voltage, frequency, type of geared motor and type of motor.
- 2) Coil voltage
- 3) Operating voltage motor
- 4) Only replaceable at Z 6 - 11, d <20mm
- 5) Not for supply voltage 380...460V/50Hz, 440...480V/60Hz
- 6) Only for supply voltage 380...460V/50Hz, 440...480V/60Hz



4F38
SF ... 384



Item	Part-Number	Piece	Description	Z	d[mm]	Designation	
	P0005435	1	SF 17 207 384	1) (Item 1-23)	11	32,35	Motor complete
		1	SF 15 214 384	1) (Item 1-23)			
		1	SA-C 57 24 384	1) (Item 1-23)			
	P0005437	1	SF 17 209 384	1) (Item 1-23)	9	27,85	
		1	SF 15 216 384	1) (Item 1-23)			
		1	SF 25 220 384	1) (Item 1-23)			
		1	SF 25 218 384	1) (Item 1-23)			
		1	SF 35 224 384	1) (Item 1-23)			
	P0005439	1	SF 17 211 384	1) (Item 1-23)	11	22,30	
		1	SF 15 218 384	1) (Item 1-23)			
		1	SF 11 211 384	1) (Item 1-23)			
		1	SA-C 57 26 384	1) (Item 1-23)			
		1	SA-C 57 28 384	1) (Item 1-23)			
		1	SA-C 57 30 384	1) (Item 1-23)			
		1	SA-C 57 32 384	1) (Item 1-23)			
		1	SA-C 57 34 384	1) (Item 1-23)			
		1	SA-C 67 32 384	1) (Item 1-23)			
		1	SA-C 67 34 384	1) (Item 1-23)			
		1	SA-C 67 36 384	1) (Item 1-23)			
	P0005441	1	SF 15 220 384	1) (Item 1-23)	9	19,20	
		1	SF 17 213 384	1) (Item 1-23)			
		1	SF 25 224 384	1) (Item 1-23)			
		1	SF 25 222 384	1) (Item 1-23)			
		1	SF 35 228 384	1) (Item 1-23)			
		1	SF 35 226 384	1) (Item 1-23)			
	P0005443	1	SF 35 230 384	1) (Item 1-23)	11	14,95	
	P0005445	1	SF 25 228 384	1) (Item 1-23)	9	12,85	
		1	SF 25 226 384	1) (Item 1-23)			
		1	SA-C 57 40 384	1) (Item 1-23)			
		1	SA-C 6742 384	1) (Item 1-23)			
	P0005434	1	SF 25 216 384	1) (Item 1-23)	13	36,90	
		1	SF 35 834 384	1) (Item 1-23)			
		1	SF 35 832 384	1) (Item 1-23)			



Item	Part-Number	Piece	Description			Designation
3	P0013099	1	104 - 120V	2)	190 - 240V 50Hz	Brake
	P0013104	1	180 - 207V	2)	380 - 460V 50Hz	
4	P0010628	3	M6x55		ISO 4762	Socket head cap screw
5	P0013265	1				Brake rotor
6	P0013267	1				Hub
7	537 008 0	1	6x6x16		DIN 6885	Feather key
8	P0011055	1	20x1,2		DIN 471	Circlip
10	P0013361	1				Fan wheel
12	P0013252	1				Fan cowling
14	P0012764	1	30x47x7	4)		Shaft seal
15	560 087 0	1	6206-2Z C3		DIN 625	Grooved ball bearing
18	560 088 0	1	6205-2Z C3		DIN 625	Grooved ball bearing
21	P0013076	1	PME400	5)		Rectifier
	P0013256	1	PME500	6)		
22	P0013278	1				Terminal box
23	P0013255	1				Terminal box cover
25	P0010561	4	M10x25	SF 1.	ISO 4762-8.8	Socket head cap screw
	P0010591	4	M10x30	SF 25; SF 35	DIN 912-8.8	
26	P0011191	4	S10			Lock washer
28	P0011993	1	130x2		SF1.	Round sealing ring
	P0012083	1	70x2		SF25; SF35	

1) Please state operating voltage, frequency, type of geared motor and type of motor.

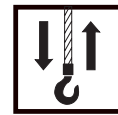
2) Coil voltage

3) Operating voltage motor

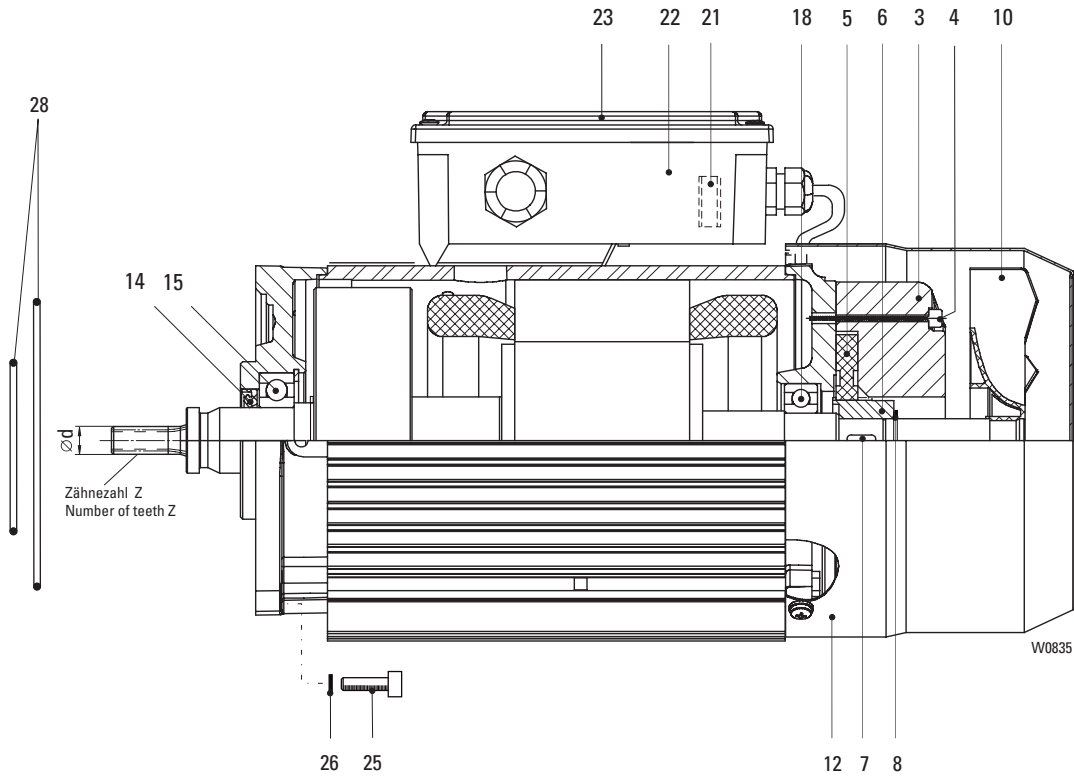
4) Only replaceable at Z 9 - 11, d <30mm

5) Not for supply voltage 380...460V/50Hz, 440...480V/60Hz

6) Only for supply voltage 380...460V/50Hz, 440...480V/60Hz



4F48
SF ... 484



Item	Part-Number	Piece	Description		Designation	
	P0005695	1	SF 35 230 484	1) (Item 1-23)	Z	d[mm]
					11	14,95
	P0005694	1	SF 35 228 484	1) (Item 1-23)	9	19,20
		1	SF 35 226 484	1) (Item 1-23)		
	P0005693	1	SF 25 216 484	1) (Item 1-23)	9	27,85
		1	SF 25 218 484	1) (Item 1-23)		
		1	SF 25 220 484	1) (Item 1-23)		
		1	SF 35 224 484	1) (Item 1-23)		
		1	SF 35 222 484	1) (Item 1-23)		



Original parts
GD; GE



Item	Part-Number	Piece	Description			Designation	
3	P0013257	1	104 - 120V	2)	190 - 240V 50Hz	3)	Brake
	P0013258	1	130 - 150V	2)	380 - 460V 50Hz	3)	
4	P0010628	3	M6x55		ISO 4762		Socket head cap screw
5	P0013265	1					Brake rotor
6	P0013267	1					Hub
7	537 008 0	1	6x6x16		DIN 6885		Feather key
8	P0011055	1	20x1,2		DIN 471		Circlip
10	P0013361	1					Fan wheel
12	P0013252	1					Fan cowling
14	P0012764	1	30x47x7	4)			Shaft seal
15	560 087 0	1	6206-2Z C3		DIN 625		Grooved ball bearing
18	560 088 0	1	6205-2Z C3		DIN 625		Grooved ball bearing
21	P0013076	1	PME400	5)			Rectifier
	P0013256	1	PME500	6)			
22	P0013278	1					Terminal box
23	P0013255	1					Terminal box cover
25	P0010561	4	M10x25		ISO 4762-8.8		Socket head cap screw
26	P0011191	4	S10				Lock washer
28	P0012083	1	70x2				Round sealing ring

1) Please state operating voltage, frequency, type of geared motor and type of motor.

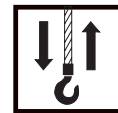
2) Coil voltage

3) Operating voltage motor

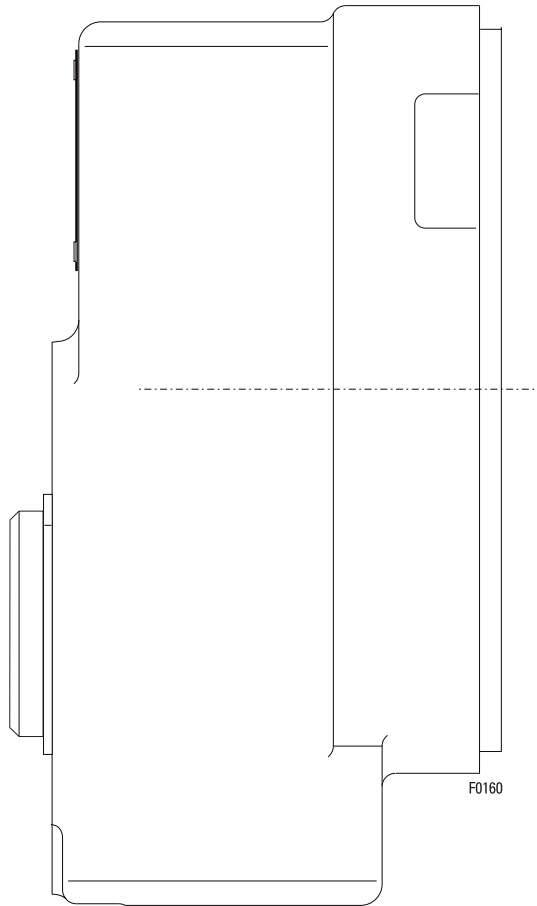
4) Only replaceable at Z 9 - 11, d <30mm

5) Not for supply voltage 380...460V/50Hz, 440...480V/60Hz

6) Only for supply voltage 380...460V/50Hz, 440...480V/60Hz



Gear
SF 17 1..



Item	Part-Number	Piece	Description	Designation
	P0004680	1	SF17 113	Gear
	P0004685	1	SF17 111	
	P0004690	1	SF17 109	
	P0004694	1	SF17 107	

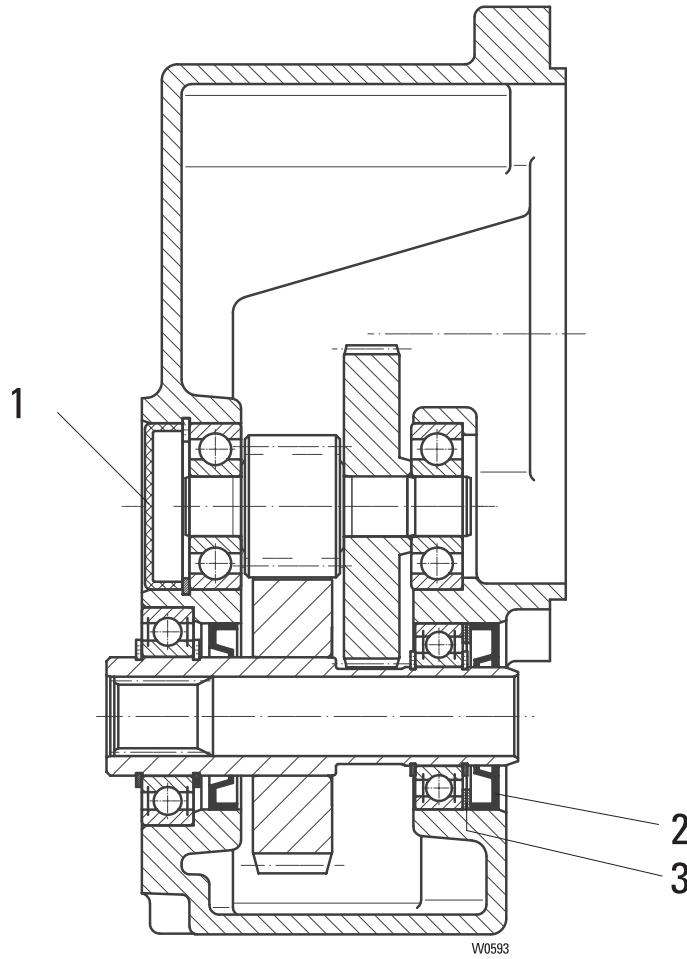
Gear only available as complete unit.
 Without gear oil: amount required see operating instruction



Original parts
GD; GE

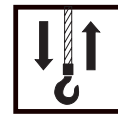


**Gear
SF 17 2..**

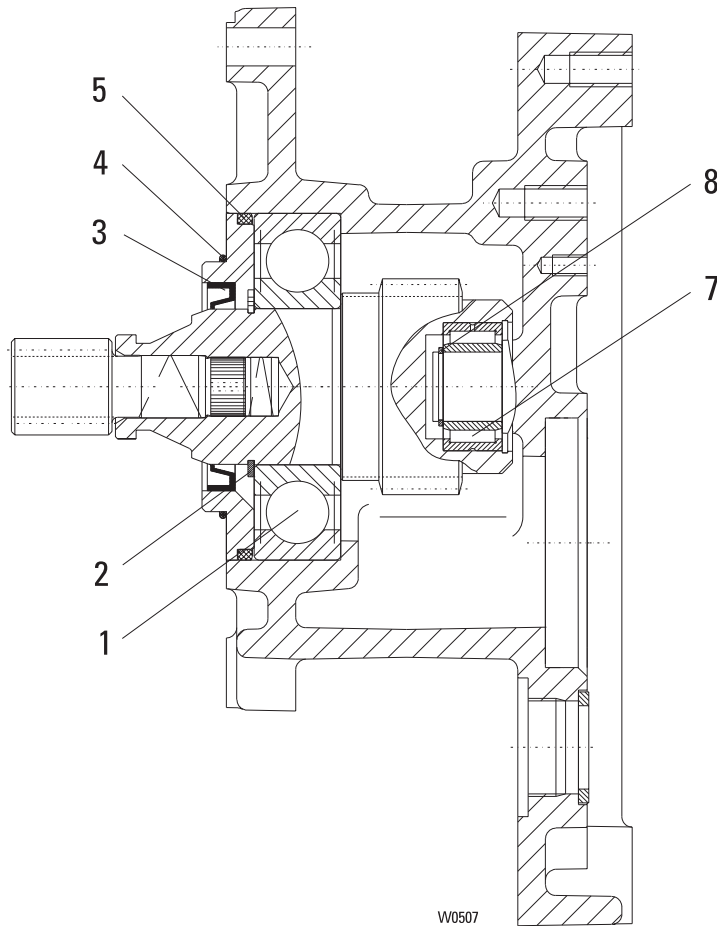


Item	Part-Number	Piece	Description	Designation	
	P0004697	1	SF17 219	1)	Gear
	P0004700	1	SF17 217	1)	
	P0004703	1	SF17 215	1)	
	P0004705	1	SF17 213	1)	
	P0004706	1	SF17 211	1)	
	P0004707	1	SF17 209	1)	
	P0004708	1	SF17 207	1)	
1	518 036 0	1	42x9,5		
2	P0012799	1	25x47x7		Shaft seal
3	P0011345	2	37x47x1		Adjusting washer

1) Gear only available as complete unit except the signed parts
Without gear oil: amount required see operating instruction.



**Intermediate gear
SF 25 83.**

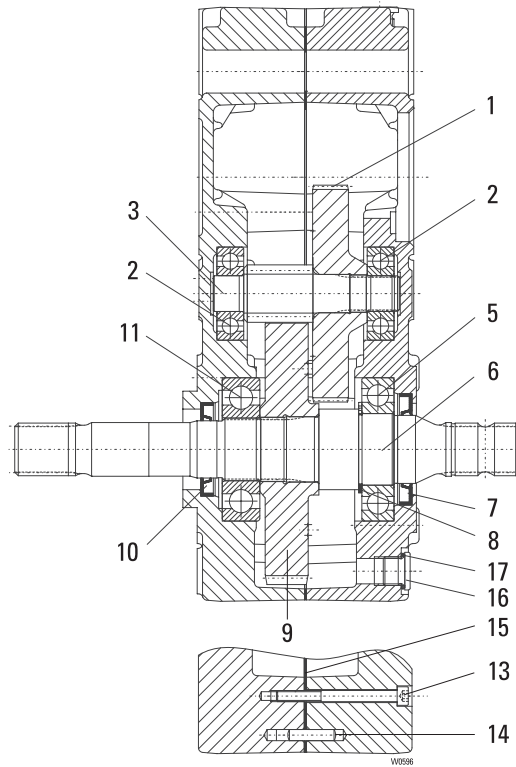


W0507

Item	Part-Number	Piece	Description	Designation
	P0005686	1	SF 25 832	Intermediate gear
		1	SF 25 834	
	24 270 37 39 0	1	SF 25 830	
1	P0012644	1	6309-27	Grooved ball bearing
2	P0011061	1	45x1,75	Locking ring
3	561 026 0	1	45x60x8 NB	Shaft seal
4	P0012083	1	70x2	Round sealing ring
5	P0012096	1	90x4	Round sealing ring
7	P0012744	1	NA 4904	needle roller bearing
8	P0011296	1	SW 20	Circlip

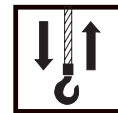


Gear
SF 25 ...

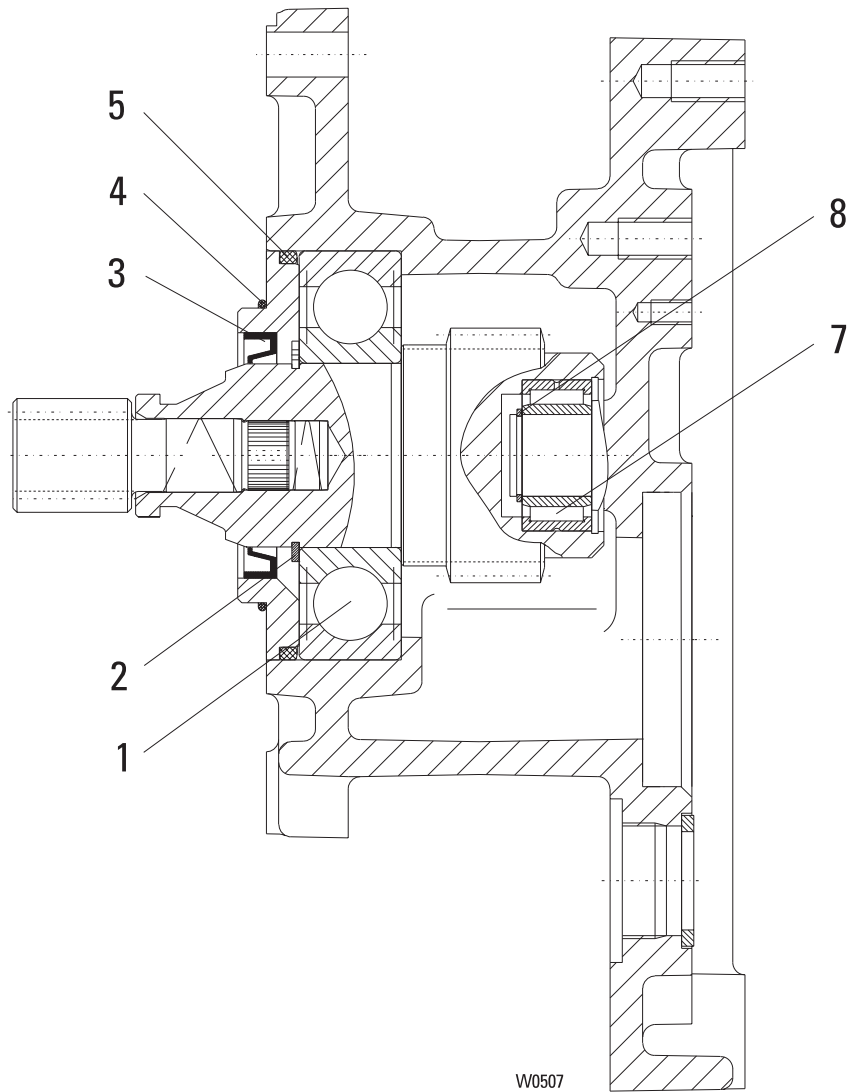


Item	Part-Number	Piece	Description	Designation	Designation
	P0005114	1	SF 25 228, SF 25 834	1)	Gear
	P0005119	1	SF 25 226, SF 25 832	1)	
	P0005124	1	SF 25 224, SF 25 830	1)	
	P0005127	1	SF 25 222	1)	
	22 270 04 30 0	1	SF 25 220	1)	
	22 270 05 30 0	1	SF 25 218	1)	
	P0005134	1	SF 25 216	1)	
	22 270 16 30 0	1	SF 25 230	1)	
1	22 273 05 11 0	1	SF 25 228, SF 25 226	SF 25 834, SF 25 832	Toothed wheel
	22 273 04 11 0	1	SF 25 224, SF 25 222	SF 25 830	
	22 273 03 11 0	1	SF 25 220, SF 25 218		
	22 273 02 11 0	1	SF 25 216		
	22 273 08 11 0	1	SF 25 230		
2	560 053 0	2	6304	DIN 625	Grooved ball bearing
3	23 273 00 19 0	1	SF 25 228, SF 25 224	SF 25 220, SF 25 216, SF 25 230	Pinion shaft
		1	SF 25 834, SF 25 830		
5	P0005499	1	SF 25 226, SF 25 222	SF 25 218 SF 25 832	Grooved ball bearing
6	P0005252	1	6208-C3	DIN 625	
7	P0012801	1	38x62x7	DIN 3760	Drive shaft
8	P0011049	1	S40x50x2,5	DIN 988	Shaft seal
9	P0005253	1	SF 25 228, SF 25 224	SF 25 220, SF 25 216, SF 25 230	Supporting washer
		1	SF 25 832, SF 25 830		
	22 273 06 11 0	1	SF 25 226, SF 25 222	SF 25 218 SF 25 832	Toothed wheel
10	P0012905	1	32x52x7	DIN 3760	
11	P0012563	1	6307	DIN 625	Shaft seal
13	P0010641	8	M6x65	ISO 4762	Grooved ball bearing
14	P0010866	4	6m6x24	ISO 2338	Socketed head cap screw
15	P0005250	1			Pin
16	P0010856	2			Seal
17	P0011988	2	C16X20	DIN 7603	Locking bolt
					Washer

1) Without gear oil: amount required see operating manual



**Intermediate gear
SF 35 83.**



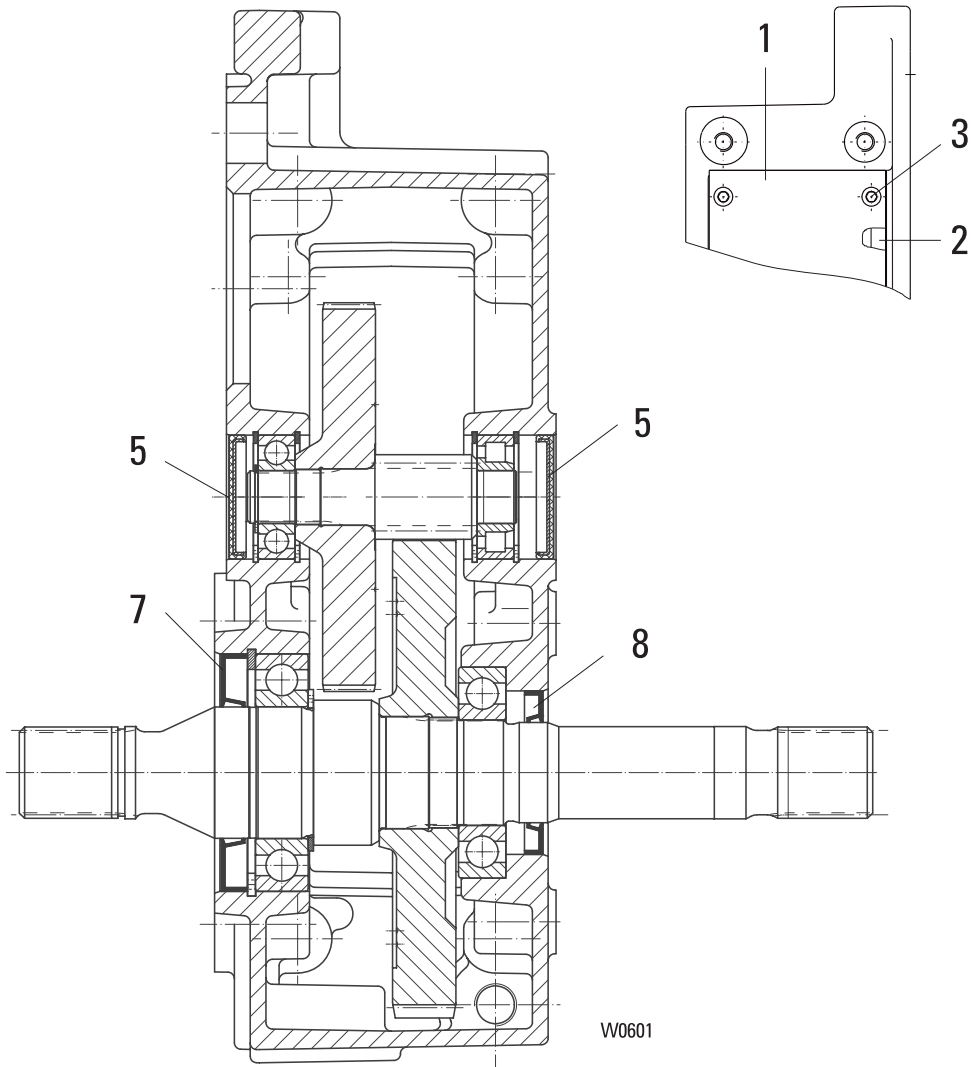
Item	Part-Number	Piece	Description	Designation	
	P0005687	1	SF 35 836	Intermediate gear	24 270 40 30 0
	P0005684	1	SF 35 834		24 270 37 30 0
		1	SF 35 832		
1	P0012644	1	6309-27	Grooved ball bearing	DIN 625 560 829 0
2	P0011061	1	45x1,75	Locking ring	DIN 471 506 101 0
3	561 026 0	1	45x60x8 NB	Shaft seal	DIN 3760 561 026 0
4	P0012083	1	70x2	Round sealing ring	NB 70 515 953 0
5	P0012096	1	90x4	Round sealing ring	NB 70 515 970 0
7	P0012744	1	NA 4904	needle roller bearing	DIN 5617 560 995 0
8	P0011296	1	SW 20	Circlip	507 122 0



Original parts
GD; GE



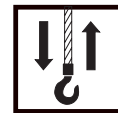
Gear
SF 35 ...



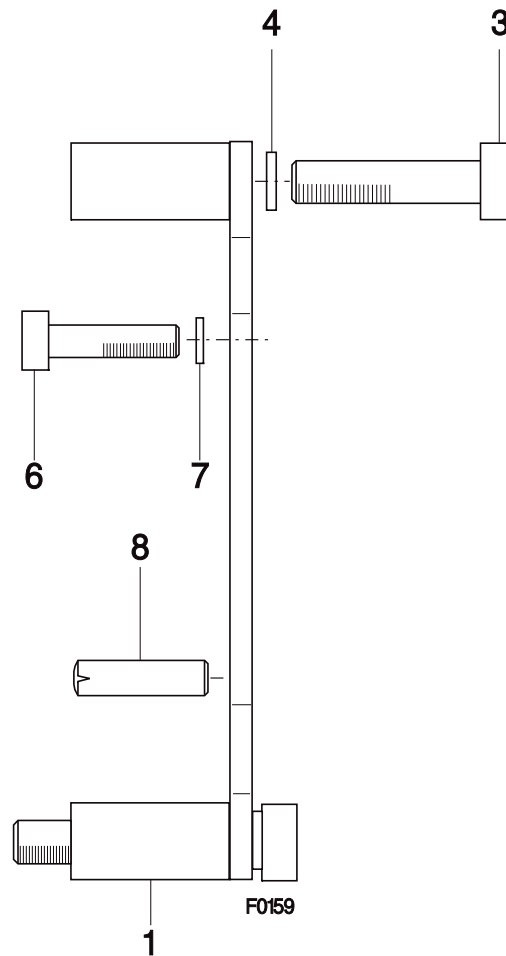
W0601

Item	Part-Number	Piece	Description	Designation
	P0005405	1	SF 35 230	Gear
		1	SF 35 836	
	P0005408	1	SF 35 228	
		1	SF 35 834	
	P0005410	1	SF 35 226	
		1	SF 35 832	
	P0005413	1	SF 35 224	
	P0005415	1	SF 35 222	
	P0005418	1	SF 35 220	
1	P0005498	1		
2	P0005497	1		Seal
3	P0010644	8	M6x16	Socket head cap screw
			DIN 6912-8.8	
5	P0012187	1	47x6,5	End cap
7	P0012802	1	AS50x90x10	Shaft seal
8	P0012801	1	AS38x62x7	Shaft seal

1) Gear only available as complete unit except the signed parts
Without gear oil: amount required see operating instruction.



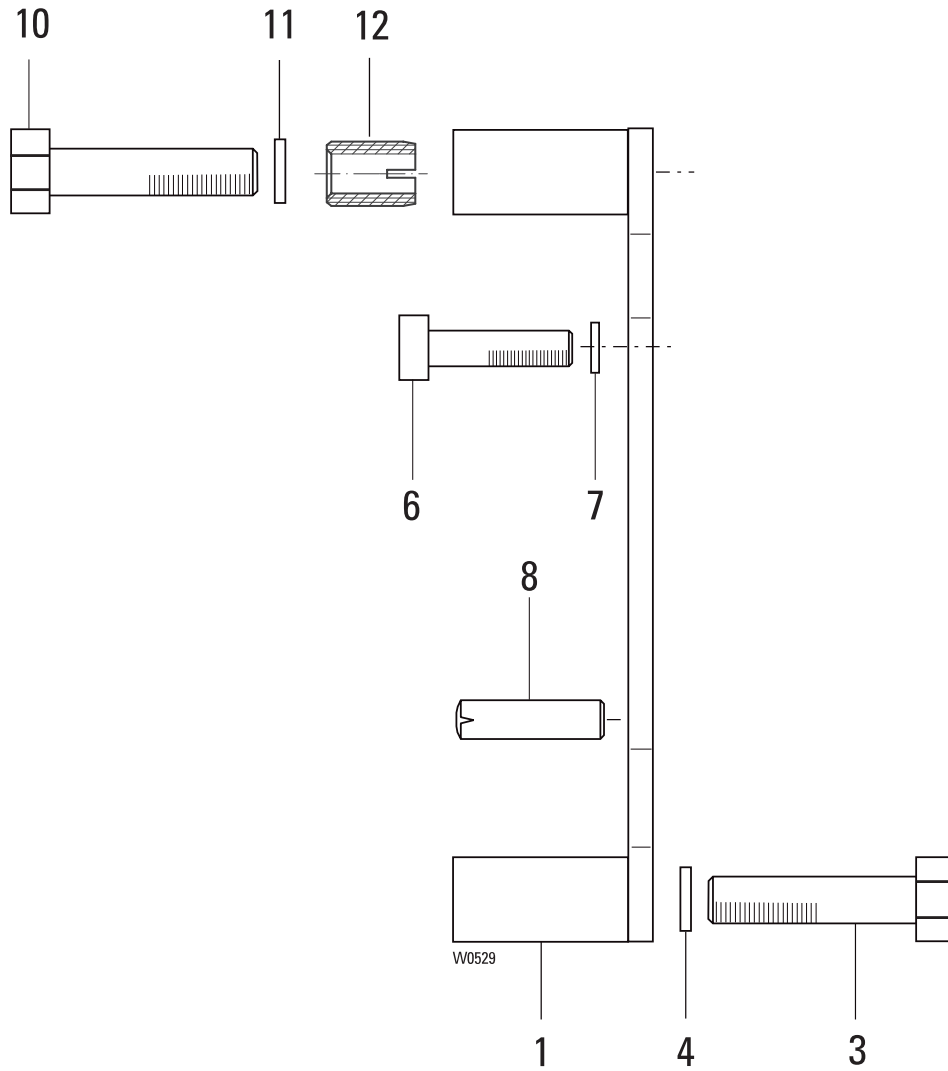
**Torque support
 SF 17**



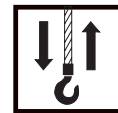
Item	Part-Number	Piece	Description	Designation
1	P0004684	1	SF1 (Item 3-8)	Torque support
3	P0010711	4	M8x45 DIN 912-8.8	Socket head cap screw
4	P0011190	4	S8	Locking disc
6	P0010557	4	M8x16 DIN 912-8.8	Socket head screw
7	506 839 0	4	S8	Locking disc
8	P0010955	2	8m6x24 DIN 7	Pin



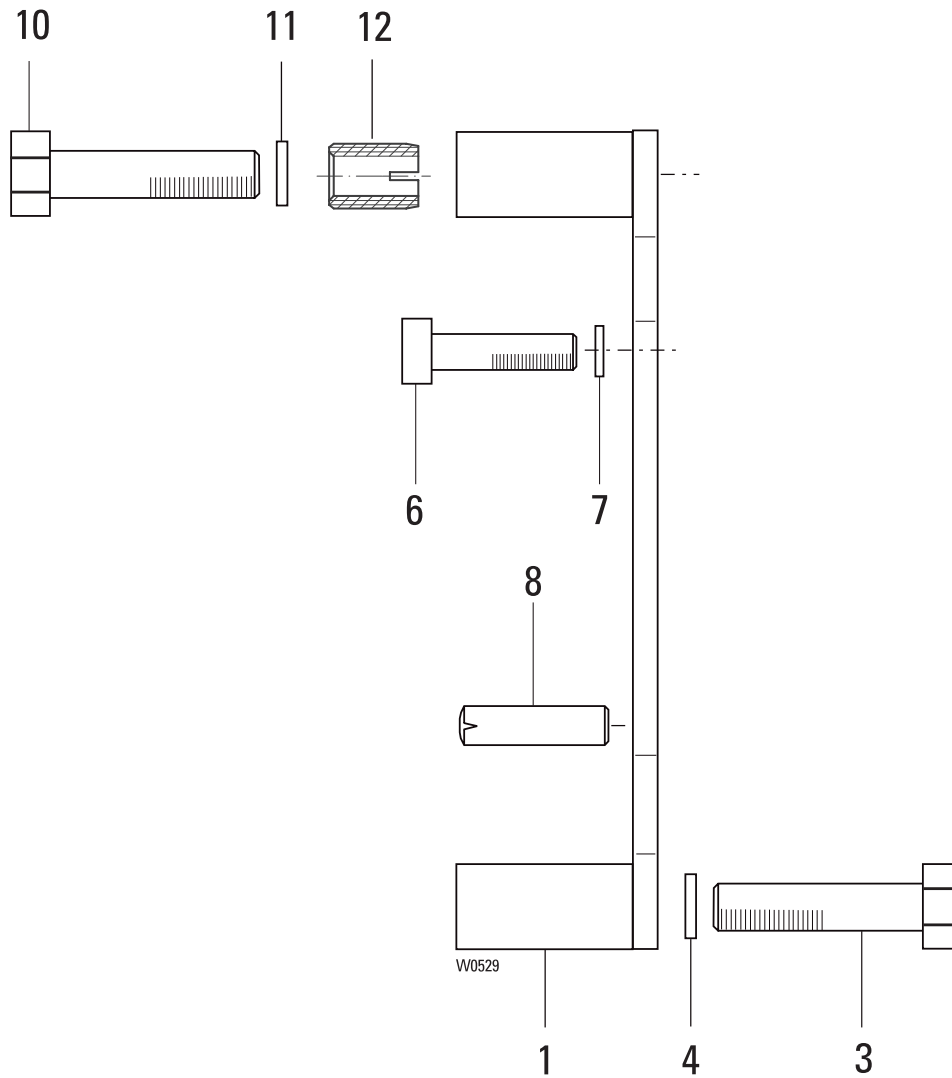
Torque support
SF 25



Item	Part-Number	Piece	Description	Designation
1	22 270 03 22 0	1	SF 25 (Item 3-11)	Torque support
3	P0010575	2	M12x50 8.8 ISO 4014	Hexagon head cap screw
4	P0011286	2	SKM12	Locking disc
6	P0010589	4	M8x25 8.8 ISO 4762	Socket head screw
7	P0011190	4	S8	Locking disc
8	P0010955	2	8m6x24 DIN 7	Pin
10	P0010605	2	M12x40 8.8 ISO 4017	Hexagon head cap screw
11	507 104 0	2	SKM12	Locking disc
12	526 000 0	2	M12x22 IN 22b	Ensats



**Torque support
SF 35**



Item	Part-Number	Piece	Description	Designation
1	P0005388	1	(Item 3-12)	Torque support
3	P0010578	2	M12x65	Hexagon head cap screw
4	P0011286	2	SKM12	Lock washer
6	P0010561	4	M10x25	Socket head cap screw
7	P0011191	4	S10	Locking disc
8	P0010868	2	10m6x28	Pin
10	P0010605	2	M12x40	Hexagon head cap screw
11	507 104 0	2	SKM12	Lock washer
12	526 000 0	2	M12x22	Ensats

© 2007, Morris Material Handling
Technical Publications
Oak Creek, WI 53154
1-800-933-3001
Bulletin HP-57